



Welcome Back!

Briefing Slides for Release of 2023 GCE O-Level Results

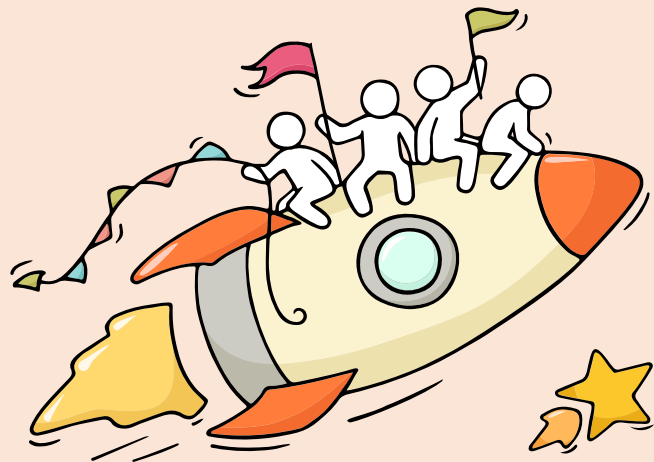


11 January 2024

Prepared by: Mr Abu/ayh

Dear students,

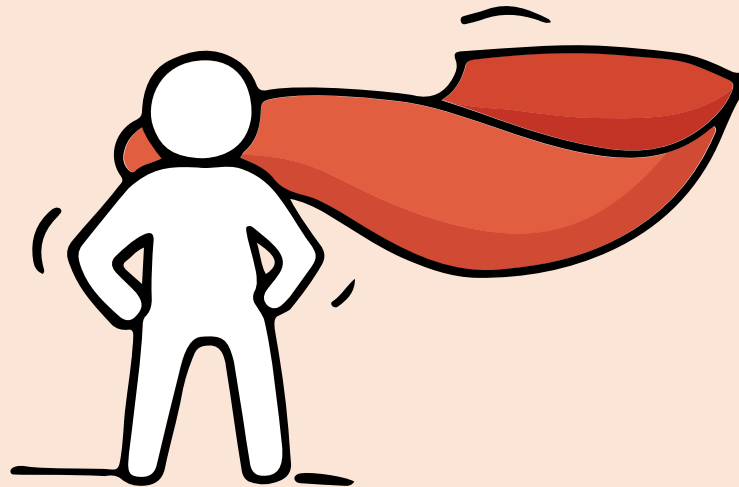
You have worked hard to reach this stage. Let's celebrate our efforts!



Finally, we are about to receive our results!



Remember that while **everyone's educational journey is different, we can each have a fulfilling outcome!**



Thinking about Your Next Step?

Consider these questions!

Where do I want to go?

Who am I?



How Do
I Get There?

Concerned about your next steps?

Stop

- Calm yourself down. Take a few deep breaths.

Think

- Think through the different options that are available for you. Keep things in perspective.
- Remember that the N-Level is one part of your life journey and not the destination.

Do

- Approach a trusted adult and seek his/her help. Have a conversation with this person about what would be best for you.
- Make a decision and take action based on your options.

When you receive your results, you may experience a range of emotions.

Managing these emotions well will allow you to stay calm and make rational decisions.

Resources to help you make informed decisions



MySkillsFuture Student Portal

A one-stop portal that empowers you to embark on a journey of self-discovery and make informed education and career choices.

Use the information and tools to explore various education and career pathways and take charge of your future.

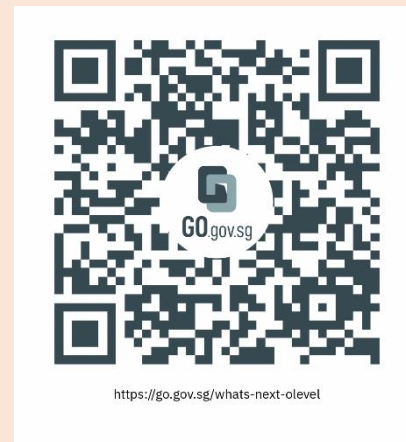
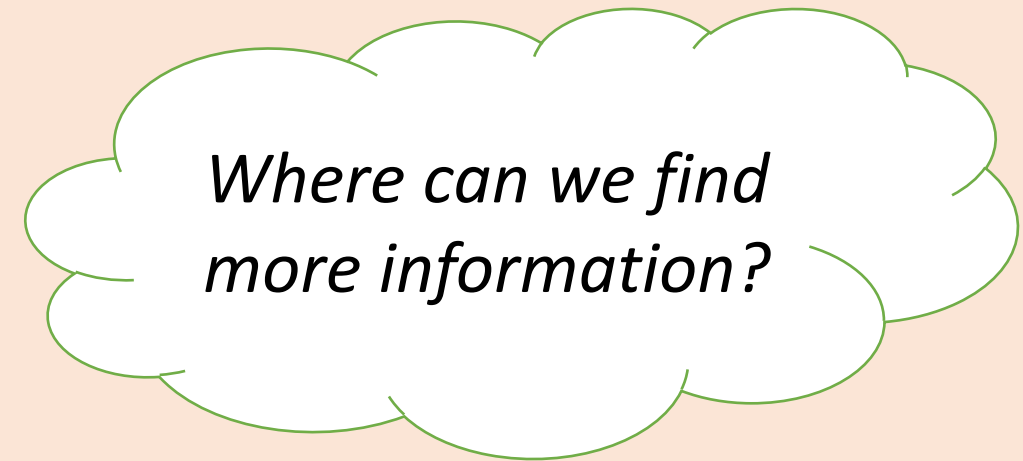
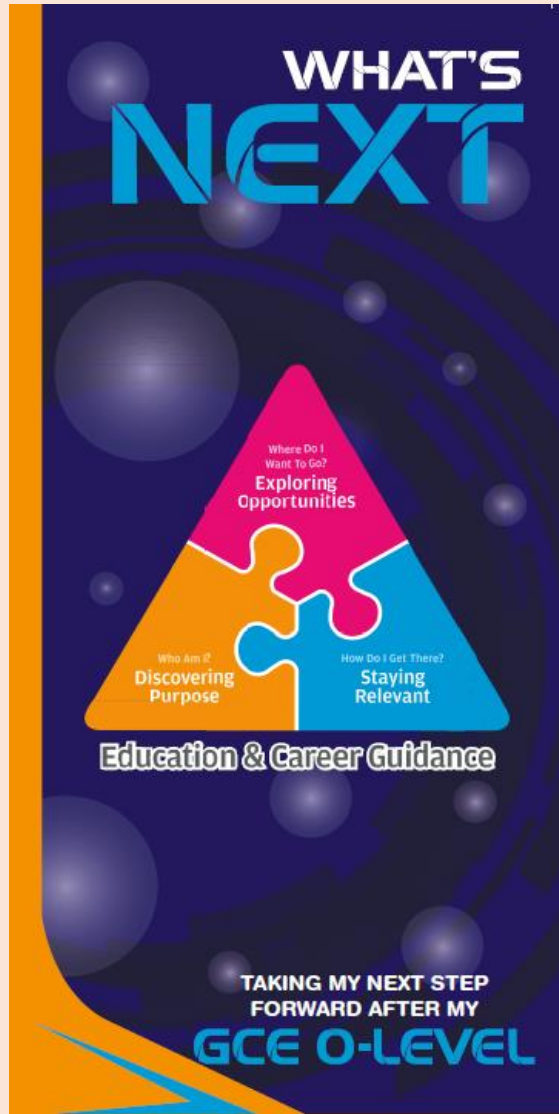
Where can we find more information?



<https://go.gov.sg/mySFsec>



Resources to help you make informed decisions



<https://go.gov.sg/whats-next-olevel>



Resources to help you make informed decisions

Information on Post-Secondary Education

Learn more about the admissions exercises and programmes



<https://moe.gov.sg/post-secondary/admissions>

Learn more about the post-secondary education institutions



<https://moe.gov.sg/post-secondary/overview>

Keep a lookout for some of these signs in your peers or in yourself

How can we support one another?



D

Deliberately avoiding others

I

Increased irritability, restlessness, agitation, stress and anxiety

S

Sending or posting moody messages on social media

T

Talking about death or dying

R

Reacting differently or gradually losing interest in things they used to like

E

Eating more than usual or having a much reduced appetite

S

Sleep pattern changes with difficulty falling asleep or oversleeping

S

Slowing down of energy levels

If you notice any of these signs in yourself or your friends,
have a chat with your school counsellor or teacher
Or contact SOS 24-hour hotline at **1-767** or **1800-221-4444**

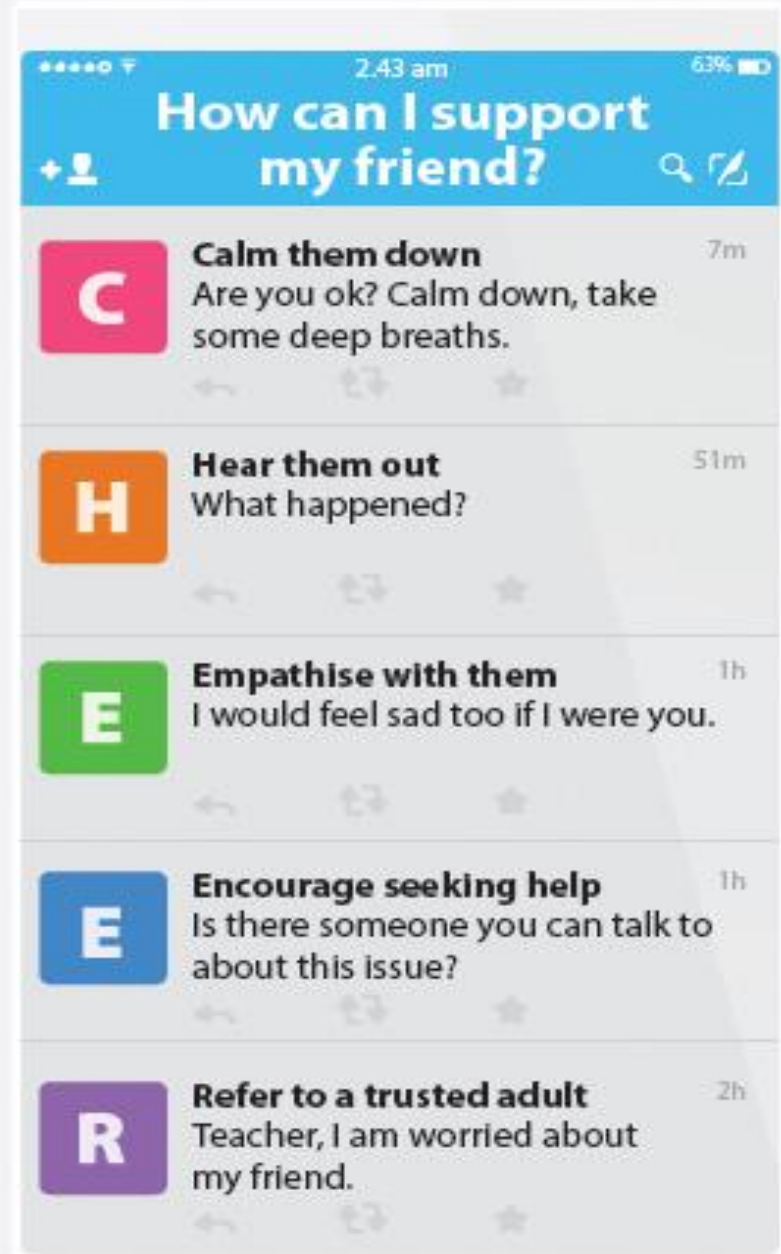



Supporting Your Friend

We may each experience different emotions upon receiving the results. You can share your friends' joy by congratulating them or give words of encouragement to friends who may be disappointed with their results.



Keep a lookout for your friends in distress. You can support them in the following ways:





Support is readily available for you.

There are other hotlines and chats available if you are more comfortable seeking help using these platforms. Scan the QR code below for a helpful resource.



SOS provides round-the-clock emotional support for those in distress, thinking of suicide or affected by suicide.

Call: **1767**
(24-hour helpline)

Whatsapp: **9151 1767**
(24-hour Care Text)

TOUCHline is a helpline to provide youths with emotional support and practical advice.

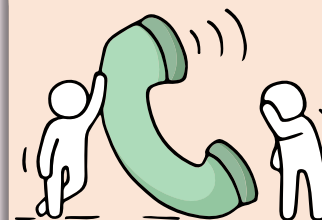
Call: **1800-377 2252**
*Monday- Friday (Excluding Public Holidays):
9am – 6pm*

Community Health Assessment Team (CHAT) provides personalised and confidential mental health checks and consultation for youths. To speak with a youth support worker, you can:

Visit: **CHAT Hub at *SCAPE, #05-05**
Call: **6493 6500/ 6501**
Email: **CHAT@mentalhealth.sg**

Carey is an online platform by Care Corner that provides free mental health check-ins with mental health professionals. Find out more at:
<https://carey.carecorner.org.sg/>

mindline.sg is an online platform that provides tools, tips and resources to help you manage your health and well-being. Find out more at:
www.mindline.sg



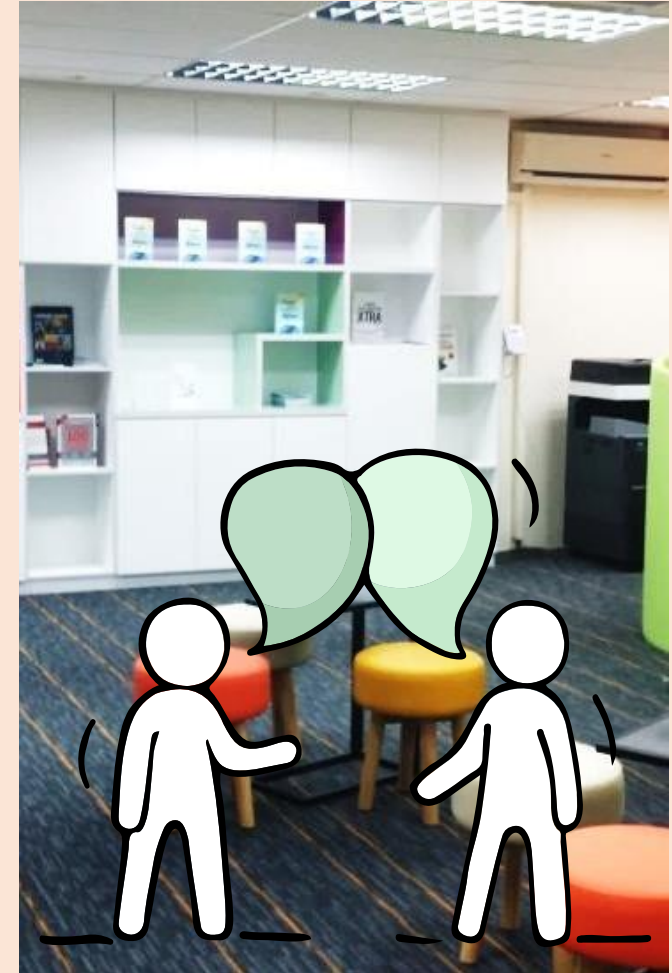
eC2 is an e-Counselling Centre where you can talk to a trained counsellor about the issues you are facing, right where you are.

Chat with a counsellor at:
www.ec2.sg
*Monday – Friday (Excluding Public Holidays):
10am – 12pm & 2pm – 5pm*

Speak to an ECG Counsellor



- Making informed decisions
 - Speak with your teachers in school, besides your parents, on the possible pathways.
 - ECG Counsellor Ms Rachel Chew
 - > Make appointment: <https://go.gov.sg/nssecg>
 - > Telegram chat: @ECGC_Rachel
 - > Email add: chew_pei_sze_Rachel@schools.gov.sg



Make an online or phone counselling appointment with the ECG Centre @ MOE (Grange Road) through <https://go.gov.sg/moe-ecg-centre>.

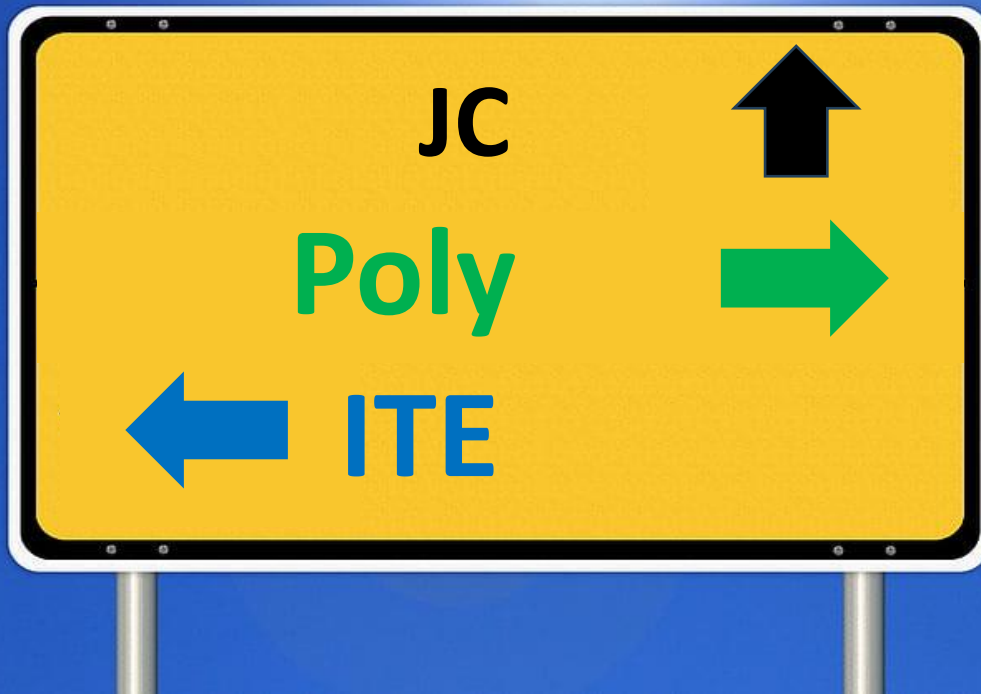


Admin Briefing

Briefing Slides for Release of 2023 O-Level Results



11 January 2024



- There are **many routes to success.**
- **Explore all possible education options** and look for one that **best fits** your **needs, interests, abilities** and **passion.**

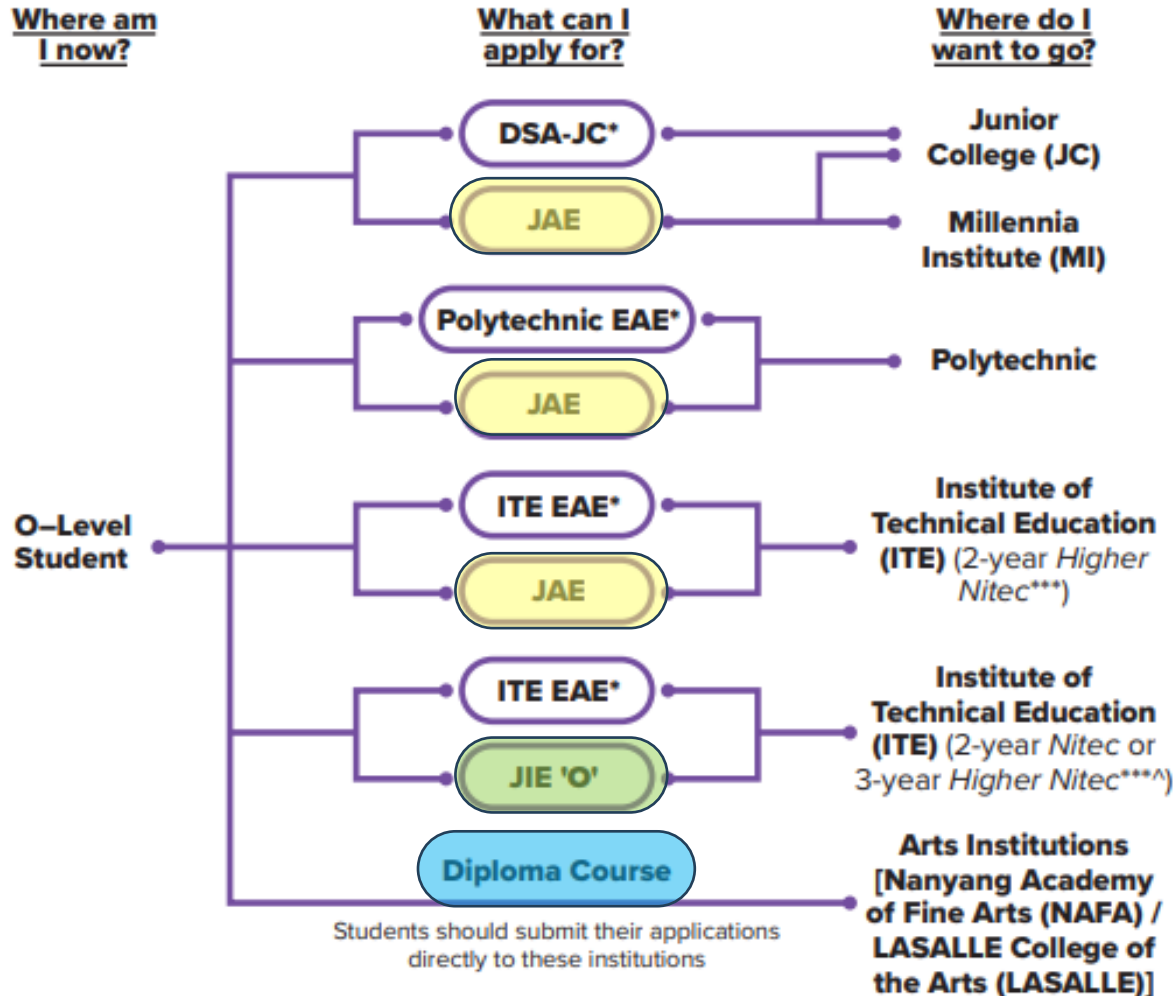




Admissions Exercises for O-Level Students



<https://www.moe.gov.sg/post-secondary/admissions>



*Students can apply through these admissions exercises before their O-Level examinations.

***Selected *Nitec* and *Higher Nitec* courses are available in traineeship mode. For more information on applying to these courses, you can visit

<https://ite.edu.sg/admissions/traineeship>.

^For the list of 3-year Higher Nitec courses, please visit <https://www.ite.edu.sg/courses/full-time-courses/nitec-and-3-year-higher-nitec>.

Source: A Guide to Post-Secondary Admissions Exercises



Details of Admissions Exercises



JAE – Joint Admissions Exercise

JAE enables GCE O-Level holders to apply for admissions to courses offered by JCs, MI, polytechnics and ITE 2-year *Higher Nitec*.



go.gov.sg/applyjae



JIE 'O' – Joint Intake Exercise 'O'

The JIE 'O' is conducted to enable GCE O-Level holders to apply for the 2-year *Nitec* or 3-year *Higher Nitec* courses conducted by ITE.



go.gov.sg/applyjie



Details of Admissions Exercises



Arts Institutions – NAFA/ LASALLE

GCE O-Level holders with the aptitude and interest to pursue the creative arts at the tertiary level may apply for diploma programmes at the Arts Institutions (AIs). Each AI runs its own admissions exercise, and interested students should apply directly to the institution.



go.gov.sg/nafa-applynow

go.gov.sg/laselle-applynow



Admissions Exercises Application Timeline



(O-Level Exams)

Oct/ Nov

LASALLE*

NAFA*

(After release of O-Level Results)

Jan

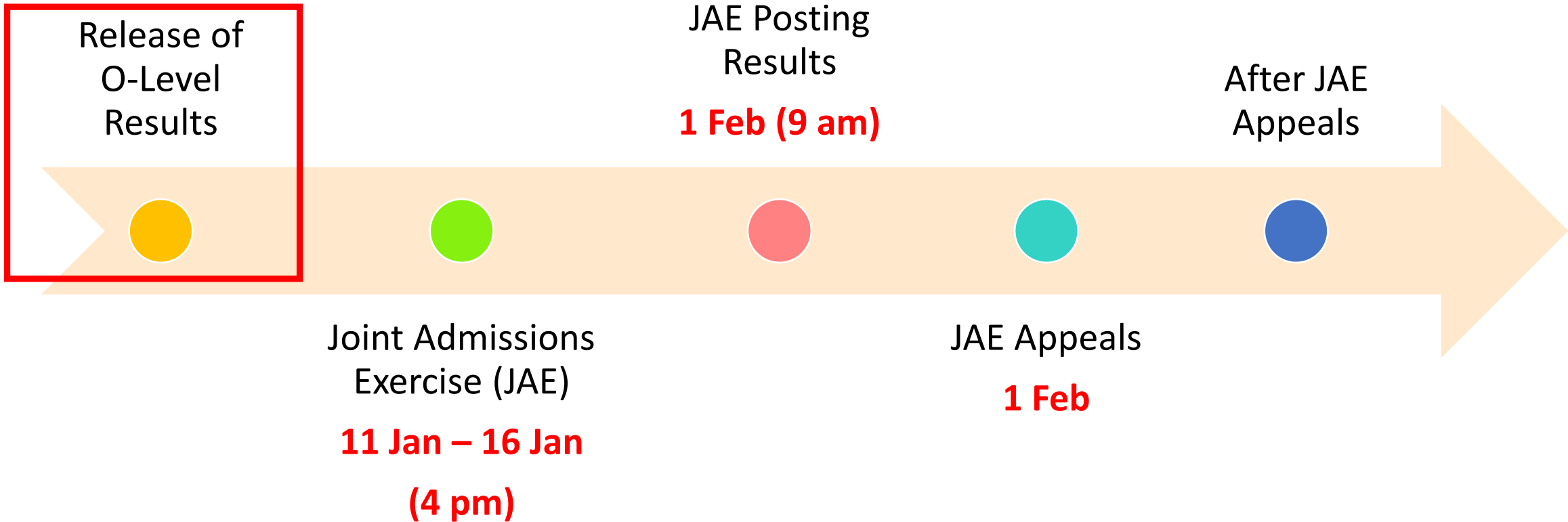
JAE (11 Jan, 4pm – 16 Jan, 4pm)

JIE 'O' (11 Jan, 4pm – 15 Jan, 4pm)

*Application to LASALLE's and NAFA's diploma programmes starts from October.

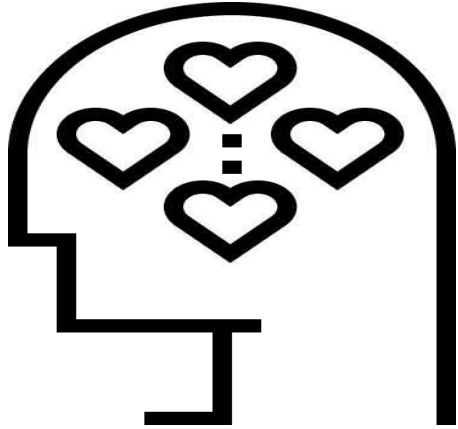


Release of O-Level Results

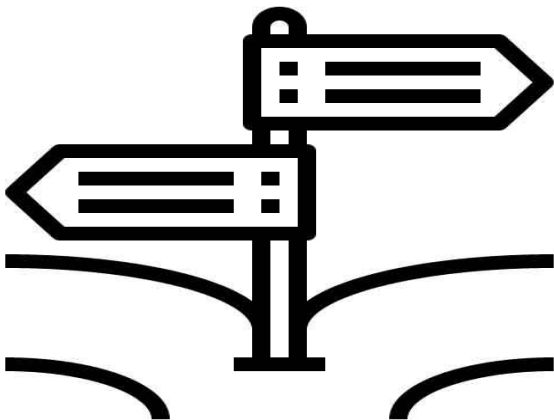




Release of O-Level Results



- **What am I good at? Are there areas that I am interested in?**
 - Think about type of courses you have strengths and are interested in
 - For example, you may be interested in engineering, healthcare or design courses



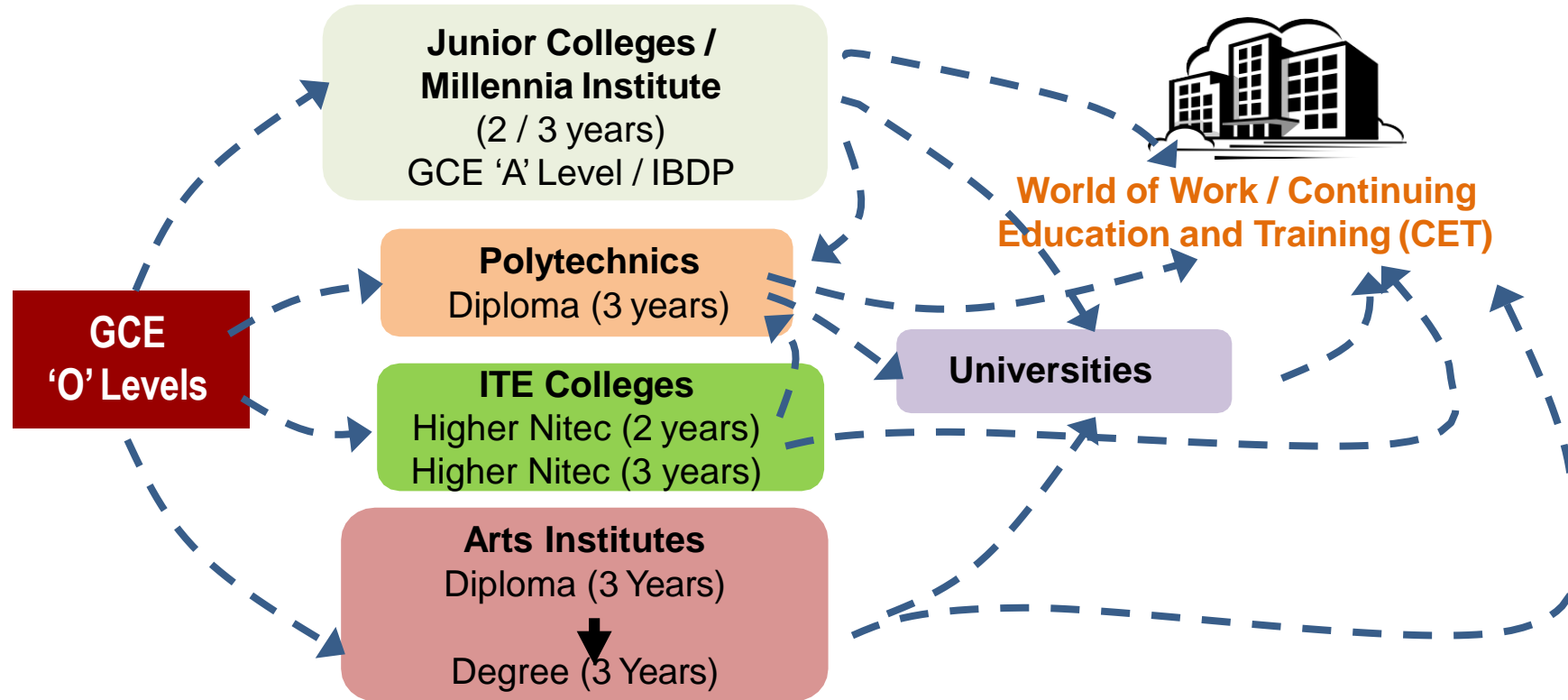
- **Where should I go?**
 - List down all the institutions that offer courses that are aligned to your interests
 - For example, if you are interested in design, you could list down the design courses offered by the polytechnics, such as the Diploma in Immersive Media, offered by NP or Diploma in Sonic Arts, offered by RP. You **can also consider courses offered by ITE such as the Higher Nitec** in Interactive Design or the Higher Nitec in Visual Effects.



Release of O-Level Results

You Have Choices!

Education Pathways for O-Level Students





Release of O-Level Results

Bonus Points for Computation of Net Aggregate Scores

1) CCA grades

Excellent: 2 points

Good : 1 point

(For admission to JC/Poly/ITE)

2) Pass in English and Higher Mother Tongue

2 points off for admission to **JC/MI courses, provided** these choices come **before** any Poly/ITE courses



Release of O-Level Results

On the day of the release of the GCE O-Level results, if you are eligible, you will receive:

1. GCE O-Level Certificate from school
2. Form A through email – contains aggregates scores for different institution types and the list of courses eligible for

Note: JAE Booklet (containing information on all the JCs/MI, polytechnics & ITE) will be discontinued from 2023.

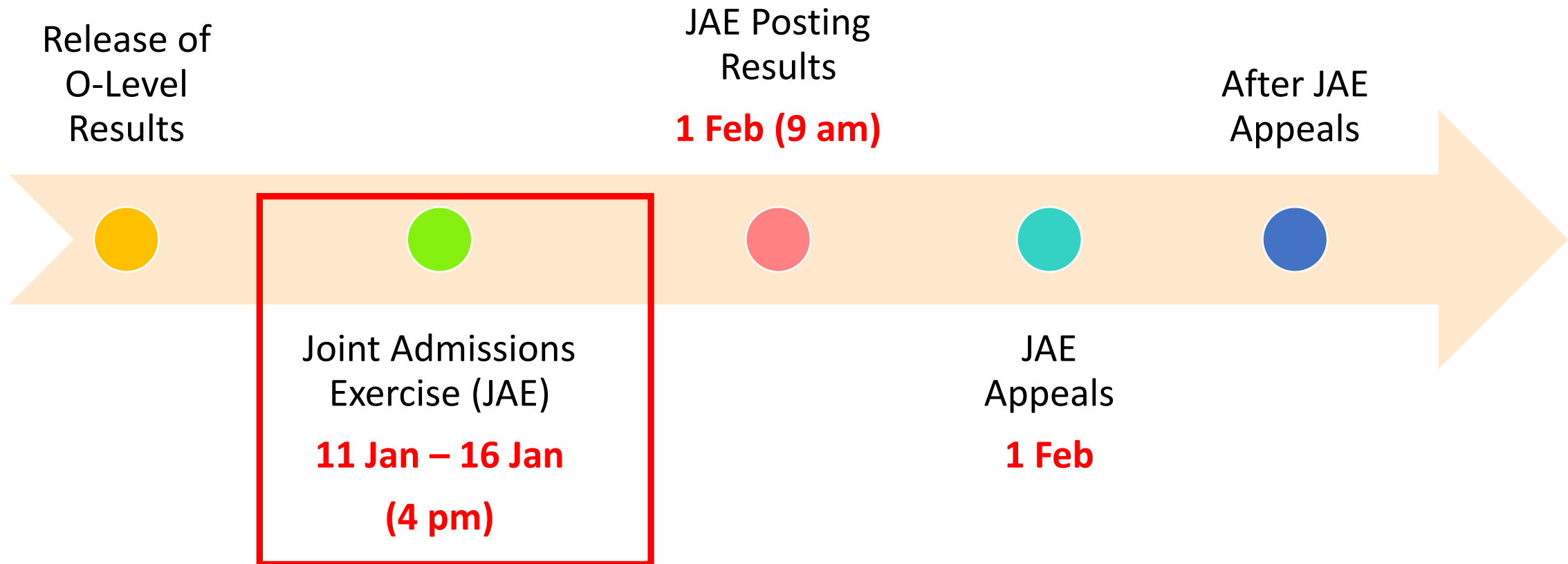
To access JAE information, visit [Joint Admissions Exercise \(JAE\)](#)

Learn more about post-secondary institutions and courses:

- [CourseFinder](#)
- [SchoolFinder](#)



Joint Admissions Exercise (JAE)





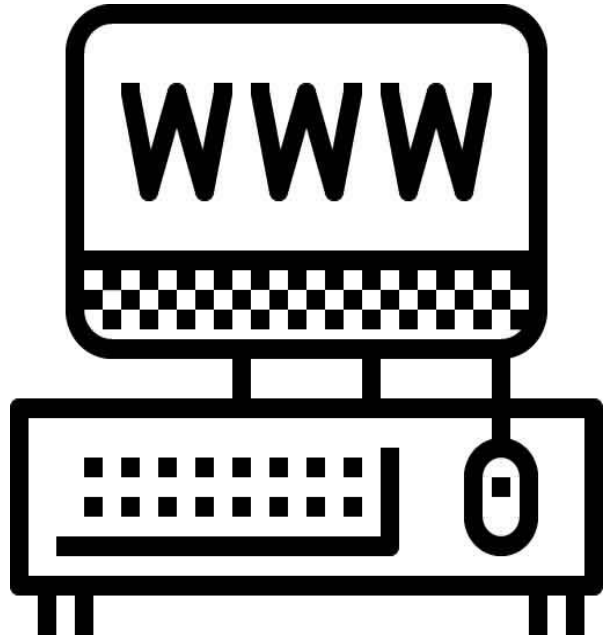
Joint Admissions Exercise (JAE)



- Use Singpass to access the JAE-IS (JAE-IS): accessible through the JAE website <https://www.moe.gov.sg/jae>
- *Email will be sent to students to inform of their JAE eligibility and the same email will include Form A*
- Form A contains gross aggregate scores for JC, MI, polytechnic and ITE aggregate types, and the JAE courses that you are eligible to apply



Joint Admissions Exercise (JAE)

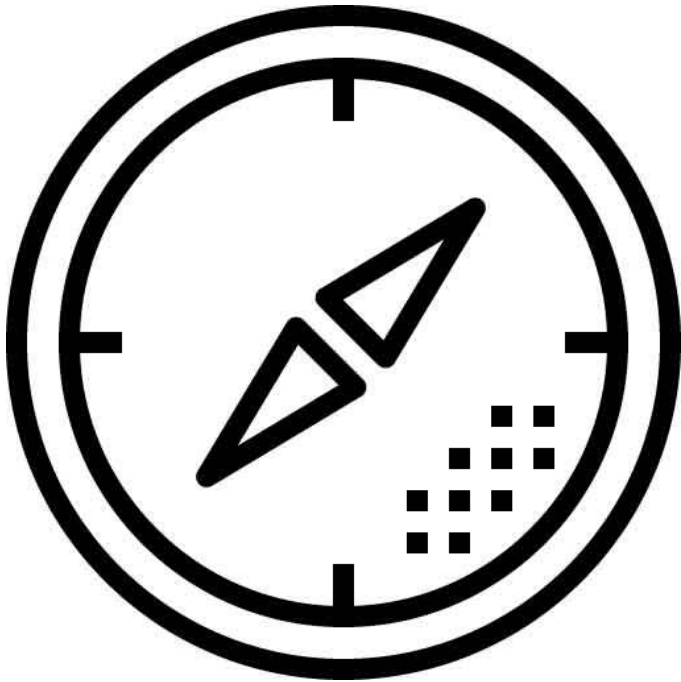


- Students who are unable to submit application via JAE-IS (e.g. not eligible to apply for Singpass) may seek assistance through the [JAE Request Form](#) during JAE application period
- Students eligible for JAE but did not receive the email containing their Form A, they can log in to the JAE Internet System (JAE-IS) using Singpass to download their Form A during the JAE application period



Joint Admissions Exercise (JAE)

Choose the courses wisely



1. Students should **consider their course choices wisely**. In the JAE, applicants are posted to a course **based on merit** according to their **net aggregate scores** (taking into account any bonus points applicants are eligible for).
2. Students should make **full use of their 12 choices**. If a student is unsuccessful in getting a place in any of his/her registered choices, he/she will be posted to a course with **remaining vacancies** **AFTER** all the other **students** are being posted according to their registered choices.



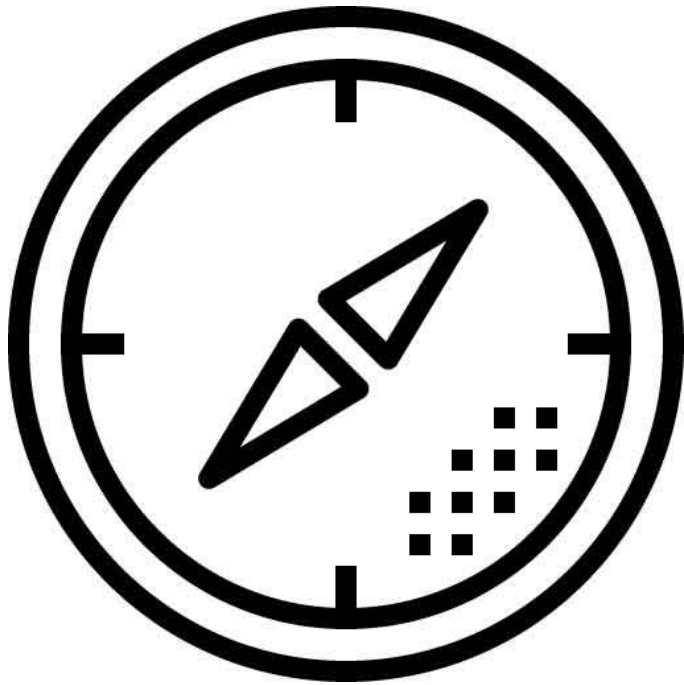
Joint Admissions Exercise (JAE)



Passion	First 3 to 4 choices: Go with your heart - pick JC/Poly courses you really want to pursue, even if it's a few points above your aggregate
Practical	Next 3 to 4 choices: Be practical - pick JC/Poly courses close to your aggregate score
Prudent	Remaining choices: Play it safe - pick JC/Poly courses above your aggregate score
Maximise	Fill up all 12 choices: Even if you are really confident of getting into your desired course



Joint Admissions Exercise (JAE)



- Form A provides the list of courses that you are eligible to apply.
- Use 2023 cut-off-points as a guide from the JAE website
- For additional advice, you can approach your ECG counsellor, school teachers and parents, or visit the ECG centre at MOE Grange Road
- Print and keep the Verification Slip as proof of your application.



Ministry of Education
SINGAPORE

<p style="text-align: right;">000684-3005</p> <p>Name : TEST NAME 111</p> <p>Address : 111 BUKIT BATOK EAST AVENUE 1 #11 -11 SINGAPORE 1111111</p> <p>School Code : 1111</p>	<p>Centre Index No. : 2222222217</p>
--	--------------------------------------

No JAE PIN will be issued. To use Singpass to log in to JAE-IS.

Subject and grade based on examination results

Please apply your course choices by DD/MM/YYYY, 04:00 PM.

Your 20XX GCE O-Level Examination results:

ENGLISH LANGUAGE = A1, HIGHER CHINESE = C5, CHINESE = B3, MATHEMATICS = A2, ADDITIONAL MATHEMATICS = A1, PHYSICS = B3, CHEMISTRY = B4, HUMANITIES (SOCIAL STUDIES, HISTORY) = A1, LITERATURE IN ENGLISH = B3

CCA = EXCELLENT

Aggregate types and scores

Your aggregate scores:

JC	MI	Polytechnic				ITE		
L1R5	L1R4	ELR2B2-A	ELR2B2-B	ELR2B2-C	ELR2B2-D	ELB4-A	ELR1B3-B	ELR2B2-C
11	0	0	0	0	0	0	0	0

Gross scores, before deduction of bonus points.

Your eligible courses:

- You meet the entry requirements for the below courses and are eligible to apply. However, a place in the course is not guaranteed as admission is based on merit, your choices and available vacancies.
- Course codes and descriptions can be found in www.moe.gov.sg/jaecourses.

Form A

JC/MI:

You are eligible for all JC/MI courses.

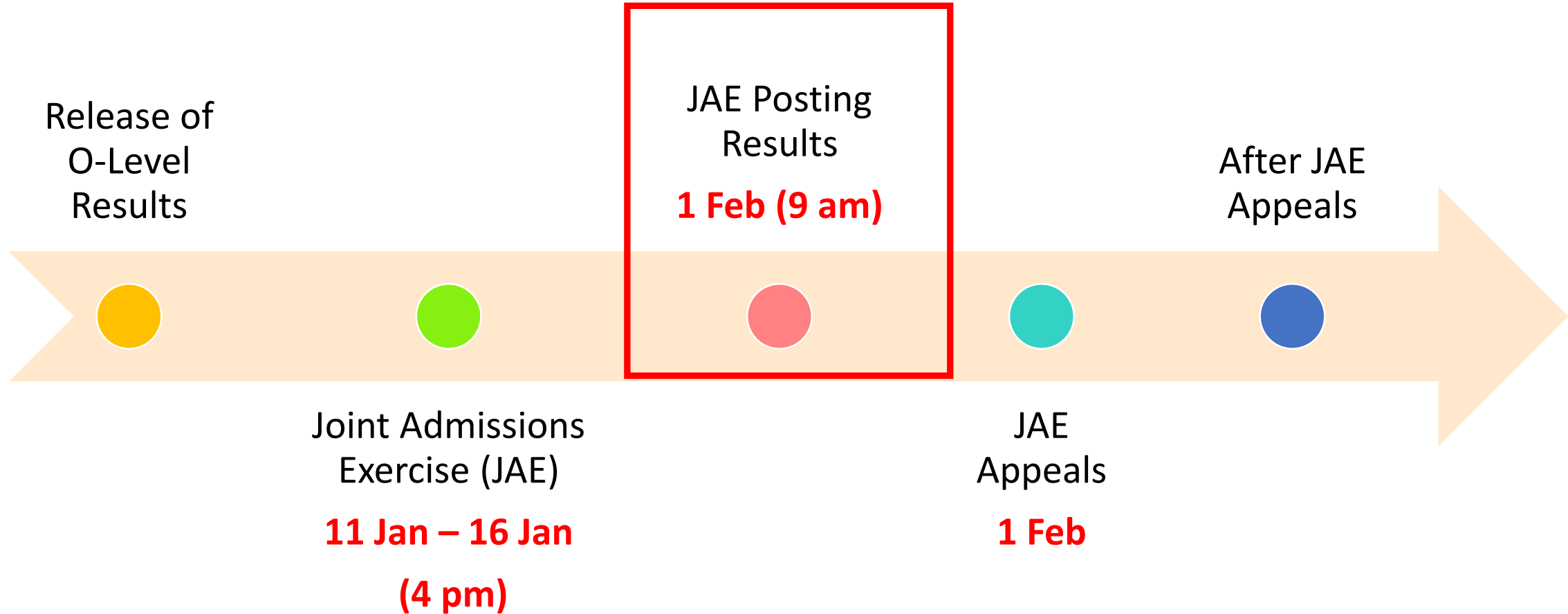
Polytechnic/ITE:

- *Eligibility does not guarantee placement.
- *Admission is based on merit, choices and available vacancies.
- * Find out more on these courses using [CourseFinder](#)

C33 C34 C35 C36 C38 C41 C42 C43 C45 C46 C47 C49 C50 C51 C52 C54 C59 C60 C62
C63 C64 C65 C66 C67 C69 C70 C71 C72 C73 C75 C80 C81 C83 C85 C87 C89 C93 C94
C96 C97 C98 N11 N12 N13 N40 N41 N42 N43 N44 N45 N48 N50 N51 N53 N54 N55 N56
N57 N59 N60 N65 N67 N69 N71 N72 N73 N74 N81 N82 N83 N85 N91 N93 N94 N96 N97
N98 R11 R12 R13 R14 R16 R17 R18 R19 R21 R22 R24 R25 R26 R28 R29 R32 R33 R34
R35 R36 R37 R39 R40 R41 R42 R43 R45 R46 R47 R48 R49 R50 R52 R53 R54 R55 R56
R57 R58 R59 R60 S30 S31 S32 S35 S38 S39 S40 S41 S42 S43 S47 S48 S50 S53 S54
S56 S63 S64 S66 S67 S68 S69 S70 S71 S73 S74 S75 S76 S86 S88 S89 S90 S91 S93
S94 S95 S97 S98 S99 T01 T02 T04 T07 T08 T09 T10 T13 T17 T18 T20 T22 T23 T25
T26 T28 T29 T30 T33 T35 T38 T40 T43 T45 T48 T50 T51 T52 T53 T56 T58 T59 T60
T62 T63 T64 T65 T66 T67 T68 V10 V11 V12 V13 V14 V15 V18 V19 V21 V26 V27 V28
V29 V30 V35 V39 V40 V41 V42 V44 V45 V47 V49 V52 V54 V55 V56 V60 V61 V62 V63
V64 V65 V66 V67 V68 V69 V70 V71 V72 V73 V74 V75 V77 V78 V80 V81 V82 V84 V85
V86 V87 V88 V89 V90 V91 V92 V93 V94 V95 V96 V97 V98 V99



JAE Posting Results





Release of JAE Posting Results

Release of JAE posting results will be on **Thursday, 1 February 2024** through the following modes:

- JAE-IS, which you can access using your Singpass
- SMS, if you have provided a local mobile number in your application

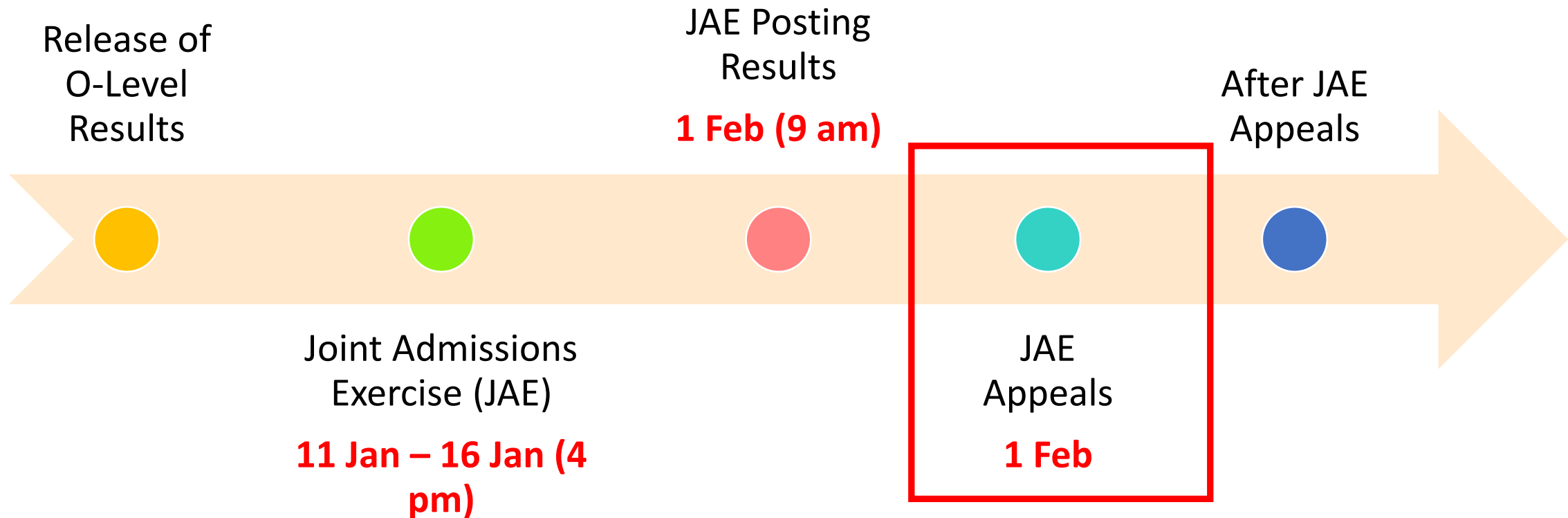


Acceptance of Offer

- **JC/MI** – Report to the respective JC/MI on the morning of the next working day **(2 Feb 2024, Friday)** after the release of posting.
- **Polytechnic** – an enrolment email or card sent to your residential address, **by end of Feb**. It contains instructions on the enrolment process, **complete your online enrolment by the deadline stated**.
- **ITE** – will receive an email with the enrolment instructions on the **same day as the release of JAE posting results** and **accept the offer online within the stipulated period** indicated in the email.



JAE Appeals



****If you are waiting for an appeal outcome, you must still accept the online offer of your posted course or report to the JC. If your appeal is successful, inform the polytechnic/ITE/JC subsequently.**



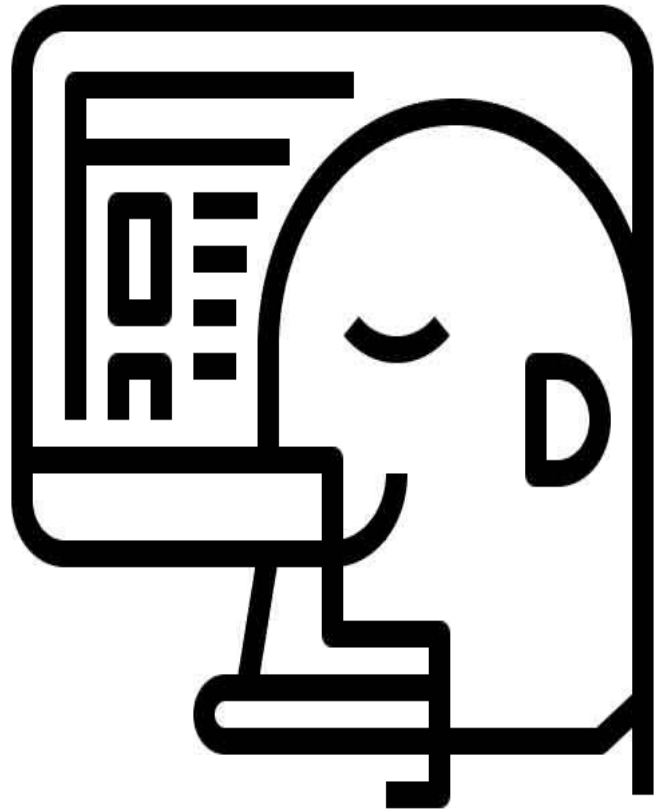
JAE Appeals



- **Which courses should I appeal for?**
 - You can only **appeal for courses where you meet the current year's cut-off point, as well as the MERs**
 - Refer to the JAE appeals website for information on the net aggregate range for the previous JAE for specific courses for the current year
 - Refer to the CourseFinder on MOE's website (<https://www.moe.gov.sg/coursefinder>) for information on the subject-specific MERs on courses that you are interested to appeal
 - Think about appealing for a range of courses, including those offered by ITE



JAE Appeals



- **How do I appeal for a course?**

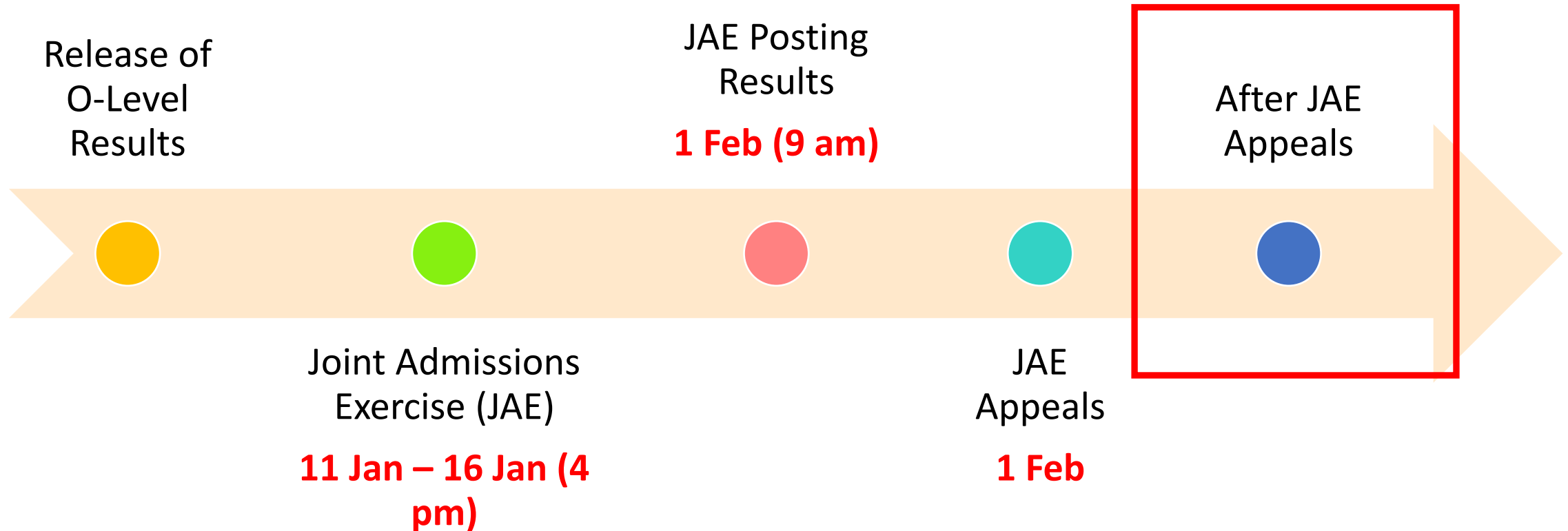
- Submit your appeal through the JAE appeals website:

<https://jaeappeal.edu.sg>

- Use all your 6 JAE appeals choices carefully
- For additional advice, you can approach your school teachers, ECG counsellor and parents, or make an ECG counselling appointment via the ECG Centre@MOE (Grange Road) at <https://go.gov.sg/moe-ecg-centre>



After JAE Appeals





After JAE Appeals



- **How do I check for my JAE appeals outcome?**
 - You will be informed of your appeal outcome **through the online appeals portal, as well as through SMS notifications**
 - Look out for your appeal outcome, and consider the course you were posted to carefully
 - If you did not receive a posting by the end of JAE appeals, you will be offered an alternative course as an additional option
 - If you are **offered an alternative posting**, do **accept it and give it a try**, as it will give you a chance to continue your studies



After JAE Appeals



- Can I still appeal after the end of JAE appeals?
- You can still **appeal directly to the polytechnics and ITE** for courses that you are interested in
- You can do this **even if you have accepted the posting** offered through JAE appeals



Further Support – IT support

- There will be PCs with internet access and printing facility will be made available for your use at **Library** to register for 2024 JAE between
- **12 Jan and on 16 Jan**
Time: 9am – 4pm
- Students are to report to General Office first before proceeding to Library.
- Students can seek assistance from **Mr Iqbal** (TA) in the Library if they encounter difficulties while using the PCs at school for the 2024 JAE registration.



JC/MI e-Open House

- Mostly on 12 Jan, 13 Jan & 15 Jan
- Visit the school website to register

11 – 16 JAN '24

Venue: SP Convention Centre Level 1

Physical booths available:

- Admissions Enquiries
- Polytechnic Foundation Programme
- Student Support Services Booth
- Course Counselling by Schools
- ECG Counselling

Do join us at our Open House on the 15th Jan 2024! See you!

**HCI (College)
Open House 2024**

HWA CHONG OPEN HOUSE 2024
HORIZONS NEW

nanyangjc.moe.edu.sg facebook.com/Nanyangjc @heynanyang nanyangjuniorcollegechannel

**NANYANG
JUNIOR COLLEGE**

DAY AFTER RELEASE OF
O LEVEL RESULTS
9AM - 9PM

LET OUR DREAMS TAKE FLIGHT

2024
OPEN HOUSE

#SAYYESTONYJC

**ASRJC
Open
House
2024**

Anderson Serangoon Junior College

Let's Go ASR!

12 January 2024, 10am to 5pm

2024 JC OPEN HOUSE
12 JAN (FRI)
10:00A.M. - 2:00P.M.
Come visit us at our **Tampines Campus!**
Address: 2 Tampines Avenue 9, Singapore 529564.

Scan to find out more
about our exciting
programmes!



We've Made Our Move, What's Yours?



Poly JAE Course Counselling



Onsite Course Counselling

Admissions & Financial Aid

4 & 5 Jan 2024, 10am to 6pm
Respective School booths at [RP Open House 2024](#)

4 & 5 Jan 2024, 10am to 6pm
W1, Level 1, Room 1
(Refer to [RP Campus Map](#))

6 Jan 2024, 9:30am to 6pm
RP Library, Level 1
(Refer to [RP Campus Map](#))

6 Jan 2024, 9:30am to 6pm
RP Library, Level 1
(Refer to [RP Campus Map](#))

12 & 15 Jan 2024, 10am to 5pm
W1 Forum, Level 1
(Refer to [RP Campus Map](#))



Date

Friday, 12 January 2024

Saturday, 13 January 2024

Time

From 1:00pm to 9:30pm

From 9:00am to 1:00pm



Poly JAE Course Counselling



JAE COUNSELLING

THURS
11 JAN

FRI
12 JAN

MON
15 JAN

TUES
16 JAN

2PM
TO
5PM

10AM
TO
5PM

10AM
TO
5PM

10AM
TO
4PM

JAE COUNSELLING SCHEDULE

JAE	Date	Time
DAY 1	Thu, 11 Jan	3.00pm - 5.00pm
DAY 2	Fri, 12 Jan	11.00am - 5.00pm
DAY 3	Mon, 15 Jan	11.00am - 5.00pm
DAY 4	Tue, 16 Jan	11.00am - 4.00pm



NAFA & LASALLE Open House – 19 & 20 Jan

NAFA
NANYANG ACADEMY OF FINE ARTS



LASALLE
COLLEGE OF THE ARTS





The O-Level examination is not the destination.

It is part of your education journey.





All the best Northstars!

