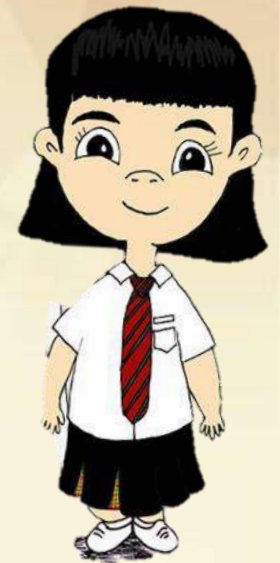
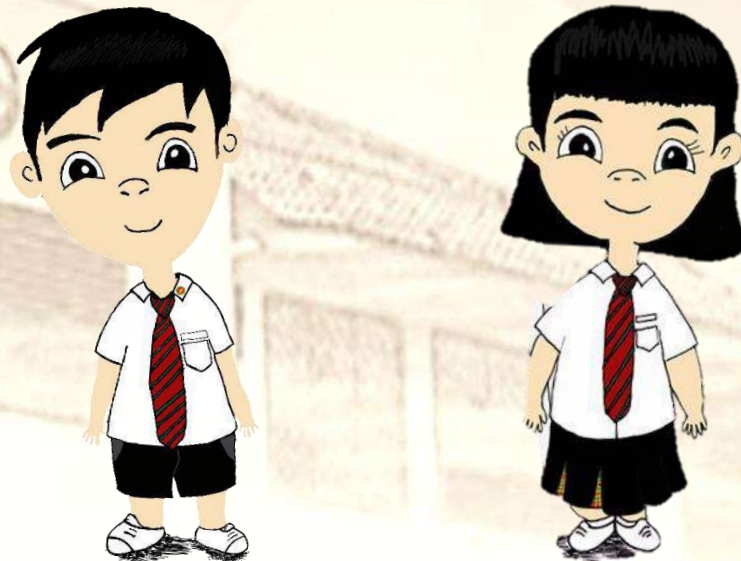


Northland Secondary School Secondary One Registration 23 December 2022



Learners who Share
Citizens who Care
Leaders who Dare

Welcome to Northland Family



Learners who Share
Citizens who Care
Leaders who Dare

Programme Overview

Time	Programme Segment
0900hrs	Welcome Address by Principal
0910hrs	Briefing on important administrative matters
0920hrs	Briefing on NDLP
0930hrs	PSG Recruitment Call
0935hrs	Full Subject Based Banding (FSBB) Briefing
1000hrs	Meet & Greet with Class Mentors
1045hrs	Meet & Greet with Guidance Team



Learners who Share
Citizens who Care
Leaders who Dare

Welcome Address by Principal



Mr Lim Kok Hwa



Learners who Share
Citizens who Care
Leaders who Dare

The People of Northland Secondary

Northstar

A term of endearment for students of Northland Secondary.

Starmaker

The competent & caring staff of Northland Secondary



Our Value Proposition for Northstars



Northland Secondary, *an inviting school with a positive schooling experience* that brings out the best in Northstars to be **Learners who Share, Citizens who Care and Leaders who Dare**

What We Strive to Achieve

- ❑ Nortland Sec a second home for Northstars, where they feel safe and cared for
- ❑ Northstars are Life-Long Learners who are Future-Ready
- ❑ Northstars of Character and Values
- ❑ High Expectations, High Support, High Care for Northstars

What's New in Secondary School?

1

Depth & Breadth of Curriculum

2

CCA is Compulsory

3

A Personal Learning Device

How Can Parents Help Their Child?

1

Be an Active Partner in Education

2

Journey with your Child

3

Establish routines & boundaries for your child

Guiding Philosophy & Beliefs

Northland an Inviting School

- Safety & Well-Being a Priority
- Conducive environment for teaching, learning and work

Starmakers Our Pride

- Starmakers are Northland's most important assets
- Starmakers make the difference!

Northstars Our Focus

- Northstars at the centre of everything we do
- Every Northstar matters



Thank You

Briefing on Administrative Matters by Year Head



Mdm Kumari
Secondary 1 Year Head



Learners who Share
Citizens who Care
Leaders who Dare



NORTHLAND
Secondary School



NORTHLAND SECONDARY SCHOOL
SECONDARY ONE
REGISTRATION
23rd December 2022
0900 – 1100

WELCOME!

Join us for the Sec 1 registration on 23 December

Please browse through at <https://go.gov.sg/nssregistration2023> or scan the QR code if you have any queries pertaining to the Sec 1 registration. Sec 1 Registration is from 0900 to 1100. Parents who are joining the webinar to sign in from 0830.



Leaders who Dare



NORTHLAND
Secondary School



SECONDARY 1 REGISTRATION (2023)



Home > Secondary 1 Registration (2023) > Welcome

Welcome

Purchase of Books

Sec 1 Booklist

Purchase of Uniforms

Financial Assistance Scheme (FAS)

Full Subject-Based Banding (FSBB)

NSS Parents Support Group

Welcome



Purchase of Books - Booklist

Subject Bands	Maps to existing:
G1	Normal Technical standards
G2	Normal Academic standards
G3	Express standards



Learners who Share
Citizens who Care
Leaders who Dare

Purchase of Books

MODE	ONSITE PURCHASE (BOOKSHOP)	ONLINE ORDER (Home Delivery OR Self Collection)*strongly encourage
DATES	23 December 2022 (Fri) 27 December 2022 (Tue) _Only for FAS 28 December 2022 (Wed) – 30 December 2022 (Fri) Priority queue will be given to those with appointment.	Last Day of Order: 24th December 2022
BUSINESS OPERATION HOUR	Mon - Fri (9am-3pm)	Self collection :Mon - Fri (9am-3pm)



Citizens who Care
Leaders who Dare

Purchase of Uniform

MODE	ONSITE PURCHASE (School)	ONLINE ORDER (Home Delivery OR Self Collection)*strongly encourage
DATES	23 December 2022 (Fri) 27 December 2022 (Tue) _Only for FAS 28 December 2022 (Wed) – 30 December 2022 (Fri) Appointment required for onsite purchase	Last Day of Order: 28th December 2022
BUSINESS OPERATION HOUR	Mon - Fri (9am-3pm)	



Learners who Share
Citizens who Care
Leaders who Dare

Financial Assistance Scheme Application

Successful application

- Email to the school and indicate whether you require transport subsidy.
- Collection date for books and uniform will be made known via return email

New application

- Submit an online form through the school website
- You will be notified by the school of the outcome once the FAS form is processed



Learners who Share
Citizens who Care
Leaders who Dare

Administration – Part 1



- Please download Parents Gateway (PG) if you have not done so.
(Refer to school website)





Take a photo of
this slide.

Administration – Part 2

Forms for Completion	Weblinks/QR Code	Deadline
1. Secondary 1 Registration 2023 (For all students)	 https://go.gov.sg/studentdataform2023	27 December 2022
2. National Digital Literacy Programme (NDLP) (For all students)	 https://go.gov.sg/pdlpadmin	07 January 2022



Learners who Share
Citizens who Care
Leaders who Dare



Take a photo of
this slide.

Administration – Part 2

Forms for Completion	Weblinks/QR Code	Deadline
<p>3. Registration Form for Parent Support Group</p> <p>(For parents who are interested in joining the PSG)</p>	 <p>https://go.gov.sg/nsspssgregistration2023</p>	31 December 2022



Learners who Share
Citizens who Care
Leaders who Dare

Art Elective Programme (AEP) or Music Elective Programme (MEP)

What are the Art & Music Elective Programmes (AEP/MEP)?

- Special MOE programmes started since 1982 for students with **passion** and **aptitude** in art/music so that they can further **deepen** their knowledge, skills and appreciation in these areas
- Develops students to be **well-rounded leaders** who are advocates for the arts
- Provide **enriched art/music learning environment** for students to pursue in-depth study into art/music



Learners who Share
Citizens who Care
Leaders who Dare

Art Elective Programme (AEP)

4-year art programme offered at AEP Centre @ NJC

You will have opportunities to

- Develop creativity, conceptual and analytical thinking
- Learn through studio practice and art criticism
- Engage with a range of materials, media and creative processes
- Learn from art practitioners and peers from AEP schools



In-depth learning in traditional and new art media, art history & theory

Prepares students for the GCE O-Level Higher Art



Learners who Share
Citizens who Care
Leaders who Dare

Music Elective Programme (MEP)

4-year music programme offered at MEP centres @ ACS (I) and DHS

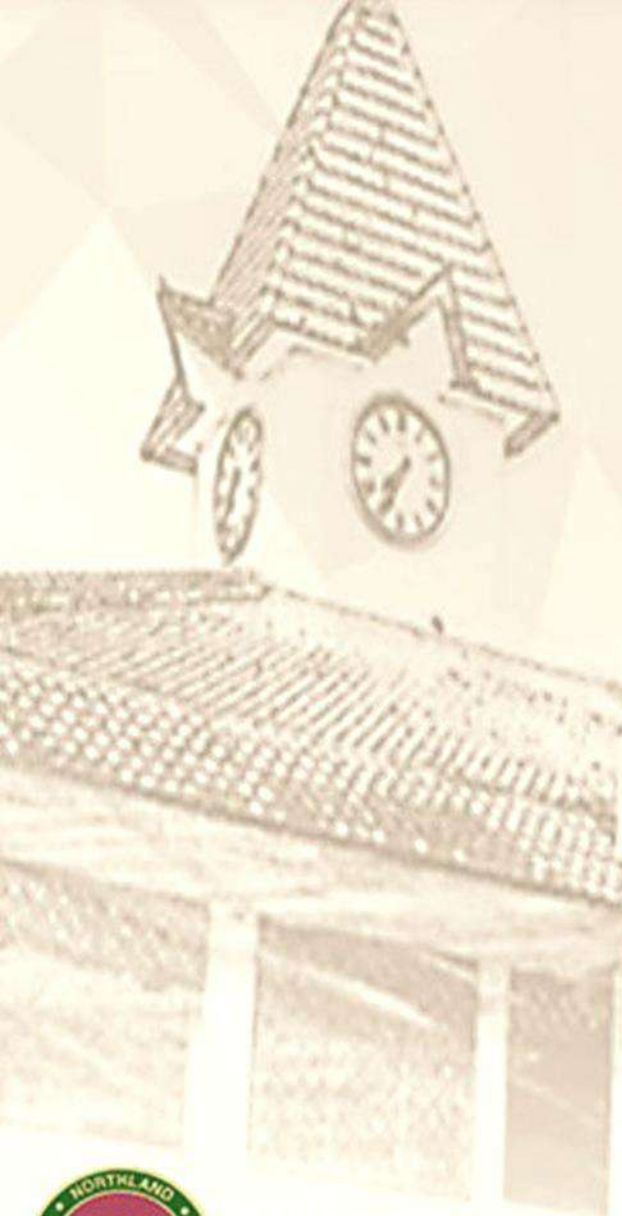
You will have opportunities to

- Develop creativity, conceptual and analytical thinking through active music learning
- Learn through analysing, creating and performing music
- Engage with a range of music across genres and traditions
- Learn from music practitioners and peers from MEP schools



In-depth learning in different musical genres and traditions, music history & theory

Prepares students for the **GCE O-Level Higher Music**.



Learners who Share
Citizens who Care
Leaders who Dare

CCA Exhibition Fair & Parent Evening

Date: 6 Jan (Friday)

Time: 2 pm – 4pm (CCA Exhibition)

4pm – 6pm (Parent Evening)

Venue: School Hall

Parents are highly encourage to attend the CCA Exhibition Fair & Parent Evening.

Please reply via Parents Gateway by 3 January 2023.



**Learners who Share
Citizens who Care
Leaders who Dare**



**Thank
you!**

National Digital Literacy Programme (NDLP) Briefing



**Mr Faizal
SH ICT**



Learners who Share
Citizens who Care
Leaders who Dare

Personal Learning Device (PLD) Initiative

Briefing for Parents



ICT Department

Northland Secondary School | *Learners who Share . Citizens who Care . Leaders who Dare .*

Agenda

- 1. Overview of the NDLP and the PLD Initiative**
- 2. Learning with a PLD in in Northland**
- 3. Supporting Students in Safe and Effective Use of Devices**
- 4. Device and Funding Information**
- 5. What's next?**



The National Digital Literacy Programme (NDLP)

The NDLP was launched in March 2020 to **make digital learning inclusive** by **equipping students with the digital literacies** to be future-ready.

Under the NDLP, every secondary school student will own a school-prescribed **personal learning device (PLD)**. Students may use funds from their Edusave Account to pay for the PLD.



Intended Outcomes of the PLD Initiative

The use of the PLD for teaching and learning aims to:



**Support the
Development of Digital
Literacies**



**Support self-directed and
collaborative learning**



**Enhance Teaching and
Learning**



ICT Department

Northland Secondary School | *Learners who Share . Citizens who Care . Leaders who Dare .*

Students' Experiences



ICT Department

Northland Secondary School | *Learners who Share . Citizens who Care . Leaders who Dare .*

Please click on the link to watch the video: <https://go.gov.sg/student-voxpath>

Learning with a PLD in Northland Secondary School



ICT Department

Northland Secondary School | *Learners who Share . Citizens who Care . Leaders who Dare .*

How will your child/ ward use the PLD?

At Northland Secondary School, your child will be using the PLD for ...

1. Active learning in all subjects
2. Authentic learning tasks
3. Alternative assessments
4. Home-Based Learning
5. Coding in Applied Learning Programme



How will your child/ ward use the PLD?

PLDs will be used to personalise and enhance students' learning experience to develop:

1. Digital literacy
2. Collaborative skills
3. Self-directed learning
4. Passionate lifelong learners

Each student learns to develop and demonstrate the knowledge, skills, practices and attitudes necessary to be a successful citizen of the 21st century.



Supporting Students in the Safe and Effective Use of the Devices



ICT Department

Northland Secondary School | *Learners who Share . Citizens who Care . Leaders who Dare .*

Cyber Wellness Concerns Identified by International Studies



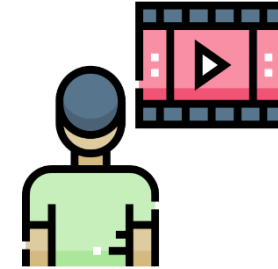
Harmful Online Content

50% of Singaporean teenagers are exposed to cyber threats and 28% of them are exposed to violent content.
(COSI, 2020)



Distraction from Learning

72% of teens feel compelled to immediately respond to texts, social posts and notifications.
(Kimball & Cohen, 2019)



Excessive Screen Time

Teens who don't sleep enough report higher levels of depressive symptoms than well-rested peers (31% vs. 12%).
(Kimball & Cohen, 2019)

Supporting Students in the Safe and Effective Use of the Devices

The school has measures in place to enable a safer digital environment for learning with the use of PLDs, e.g.

- Classroom management and routines
- Educating students on Cyber Wellness
- Partnering parents/guardians to support students in their use of technology for learning
- Device Management Application (DMA)



Classroom Management and Routines

G	ET READY!	<ul style="list-style-type: none">• Chromebook fully charged at the start of the day• Screen Down• Wait for Teacher's instructions
E	NGAGE in Learning	<ul style="list-style-type: none">• Be Present, physically and mentally!• Participate actively in all learning activities!
A	LERT your teachers	<ul style="list-style-type: none">• When you face cyber issues such as cyberbullying or inappropriate content• When you face technical issues with your chromebook
Be R	ESPONSIBLE for your own learning	<ul style="list-style-type: none">• Record all homework/tests in your Calendar!• Take notes to summarize your learning!• Complete all tasks assigned to you.
U	PHOLD the Responsible Use Policy	
P	ROTECT your password & your device	<ul style="list-style-type: none">• Lock up your Chromebook.• Lock the doors when you leave your classroom!



ICT Department

Northland Secondary School | *Learners who Share . Citizens who Care . Leaders who Dare .*

Cyber Wellness Education

Educating students on Cyber Wellness

MOE has made significant changes to the Character and Citizenship Education. Cyber Wellness lessons will feature significantly in the CCE2021 lessons.

Topics covered in the Cyber Wellness lessons include:

- Cyber Use
- Cyber Identity
- Cyber Relationships
- Cyber Citizenship
- Cyber Ethics



Parents'/Guardians' Role

We would like to partner parents/guardians to ensure that students are well supported in their use of technology for learning.

As parents/guardians, you can help in the following ways:

- Model good digital habits for your child/ward e.g. parents/guardians not using devices during family meals.
- Know your child/ward well, and have conversations with your child/ward about safe and responsible use of technology.
- Set ground rules for internet/device usage.
- Encourage your child/ward to use productivity tools using his/her PLD, to organise information and simplify tasks for efficiency.



Parents' Voices: In Conversation on Students' Use of PLDs for Learning



Please click on the link to watch the video: <https://go.gov.sg/parent-voxpath-1>



ICT Department

Northland Secondary School | *Learners who Share . Citizens who Care . Leaders who Dare .*

Role of Device Management Application (DMA)

- Your child's/ward's PLD will be installed with a Device Management Application (DMA) to provide a safer digital environment for learning.
- Installation of the DMA will be performed after the collection of the device. Students will be guided on the installation.
- This applies to both devices purchased through the school and pre-existing student-owned devices.
- The DMA will be **funded by MOE** and will be **uninstalled** from the device **when your child/ward graduates/leaves the school**.



Role of Device Management Application (DMA)

In-School DMA Settings (Default)

Schools will determine DMA settings for **in-school use**. As a default, these settings will continue to be in place after school as well:

- MOE and the school will set the level of web content filtering, including filtering out objectionable content or content that may not be conducive to teaching and learning (e.g. social media, pornography, gambling, or websites containing extremist content)
- Students will be able to use the device from **<7 a.m. to 10 p.m.>** daily
- The school will determine the apps and programs to be installed to support teaching and learning



Role of Device Management Application (DMA)

Providing Parents/Guardians with Greater Choice for After-School PLD Use

The school will provide parents/guardians with more information on exercising the options.

Default	Option A	Option B
In-school DMA settings will continue after school hours	Parents/Guardians can modify the DMA settings after school hours	Parents/Guardians can choose to disable DMA after school hours
For parents/guardians who want their child's/ward's use of the device to be restricted only to teaching and learning, and prefer to leave it to the school to decide on DMA settings after school hours.	For parents/guardians who want more leeway over the use of the device, and prefer to take charge of the level of restrictions for their child's/ward's use of the device after school hours.	For parents/guardians who do not want their child's/ward's use of the device to be regulated by DMA after school.

- Having default school settings continue after school hours is the best option for parents/guardians who prefer not to, or do not feel ready to manage their child's/ward's device use on their own.
- Parents/guardians can request to change their choice of DMA settings at any time.



Role of Device Management Application (DMA)

Providing Parents/Guardians with Greater Choice for After-School PLD Use

	Default	Option A	Option B
Protecting students from objectionable content	MOE/school sets level of web content filtering	Parents/Guardians can apply additional content filtering	No content filtering
Reduce distractions from learning through control of applications	Parents/Guardians and students are <u>unable</u> to install additional applications	Parents/Guardians and/or students can install additional applications after school hours, but these applications are disabled during school hours	
Limit screen time	School sets hours during which students are able to use the device online	Parents/Guardians can modify the amount of screen time*	No control over screen time

*Screen time limits set by the school will override parents'/guardians' settings during school hours.



Role of Device Management Application (DMA)

Providing Parents/Guardians with Greater Choice for After-School PLD Use

	Default	Option A	Option B
Parent/guardian account	Provided to allow monitoring of PLD activities after school hours		Not provided
Monitor students' cyber activities	Parents/Guardians can track their child's/ward's browser history after school hours		Parents/Guardians will <u>not</u> be able to monitor or control their child's/ward's use of the device through the DMA after school hours No data* will be collected during use of PLD after school hours

*Parents/Guardians and students on Option B will need to use non-Chrome browsers to avoid web browsing history tracking and web content filtering. **[Only for Windows schools]**



Role of Device Management Application (DMA)

Deciding on the Choice of After-School DMA Option

Parents/guardians may wish to consider the following questions before deciding on an after-school DMA option which is best for your child's/ward's learning.

Parents will be invited to make the option at a later date.

1. Child's/ward's current device usage habits

- How much time does my child/ward spend on their device?
- How well is my child/ward able to regulate their device usage on their own?
- Does my child/ward get easily distracted while doing online learning?

2. Parents'/Guardians' involvement

- How confident and familiar am I with managing my child's/ward's cyber wellness?
- Are there existing routines and open conversations on the use of the Internet at home?
- Am I aware of how to prevent different types of cyber threats that my child/ward might face?

Have a conversation with your child/ward to talk about which setting is best for your child's/ward's learning.



Role of Device Management Application (DMA)

Data Collected by the DMA

The DMA does **NOT** collect any of the following data:

- Login IDs and passwords entered into websites or into any applications
- Actions performed (e.g. posts, online comments, items added to a shopping cart, etc.) when visiting websites and using apps
- Documents and photos stored in the PLDs
- PLD location
- Webcam videos and microphone recordings



Role of Device Management Application (DMA)

Data Collected and Access Rights

The DMA does **NOT** collect any of the following data:

- All user data collected through the DMA will be stored in secure servers managed by appointed DMA Vendors with stringent access controls and audit trails implemented. The DMA solutions used are cloud-based Software-as-a-Service (SaaS) solutions and are trusted solutions that have been operating for many years. They have also been subject to regular security review and assessment by independent reviewers.
- MOE has assessed and concluded that the DMA solutions have sufficient security robustness to ensure data collected are properly stored and protected. MOE will also subject the DMA Vendors to regular audit on the security of the system based on tender requirements.



Role of Device Management Application (DMA)

Data Collected and Access Rights

To prevent unauthorised access, DMA Administrators and DMA Vendors will be required to access their accounts using 2-factor authentication or the equivalent to ensure proper accountability for information access and other activities performed. There will be regular account reviews and audits for DMA Administrators' and DMA Vendors' accounts.



Additional Resources for Parents

To support you in keeping your child/ward safe online, you may refer to these additional resources:

- Parent Handbooks (I) and (II) on Learning with a Personal Learning Device (shared by the school)
- Parent Kit on Cyber Wellness for Your Child (<https://go.gov.sg/moe-cyber-wellness>)
- Parent Kit on Raising a Digitally Smart Child (<https://go.gov.sg/moe-raising-a-digitally-smart-child>)
- Parenting with MOE: Instagram Live session on Raising Digitally Smart Kids (<https://go.gov.sg/iglive-raising-digitally-smart-kids>)
- Schoolbag article 'Keeping our teens safe online' (<https://www.schoolbag.edu.sg/story/keeping-our-teens-safe-online>)
- MOE Cyber Wellness Programme (<https://www.moe.gov.sg/programmes/cyber-wellness/>)
- Media Literacy Council (<https://go.gov.sg/better-internet-sg>)
- National Library's Learning & Information Literacy Resources (<https://sure.nlb.gov.sg/>)
- TOUCH Community Services (<https://help123.sg>)



Device and Funding Information



ICT Department

Northland Secondary School | *Learners who Share . Citizens who Care . Leaders who Dare .*

Northland Secondary School's PLD



The school has chosen the Chromebook because of:

- Teaching & Learning Affordances
- Affordability
- Portability
- Durability



Northland Secondary School's PLD



The school will be using the **Acer Chromebook Spin R752TN** for teaching and learning.

Total Cost with GST: \$506.10

Intel Celeron N4120 processor, 8GB
RAM, 64GB Storage,
11.6" Screen Size



ICT Department

Northland Secondary School | *Learners who Share . Citizens who Care . Leaders who Dare .*

PLD Bundle

Device Bundle

What it includes

- Acer Chromebook Spin R752TN
- Power Adaptor, Mouse, Carry Case, Stylus
- USB Type-C Earpiece w/Mic
- 3-year warranty and 3-year insurance
(2 repairs or 1 replacement claim)



Insurance Coverage

Insurance Coverage	Claimable
<ul style="list-style-type: none">● Fire● Lightning● Power Surges● Accidental e.g water spillage, drop etc● Theft due to forcible entry● Robbery <p>* Accidental loss will not be covered by insurance.</p>	<p>2 repairs or 1 replacement (3-year insurance)</p>



Technical Support for Students' Devices

Technical support will be provided to students through:

Service Desk set up in school during breaks and after school on a weekly basis

- Troubleshooting of device issues
- Solve connectivity issues
- Collection of devices to be sent for repairs

Vendor's service centre – Repair of devices (hardware issues)



Funding Support for Singapore Citizen (SC) Students

- **The cost of the device bundle can be paid using your child's Edusave account**, after setting aside provision for payment of second-tier miscellaneous fees.
- To ensure the affordability of devices, MOE has provided Edusave top-ups in 2020 to 2022 (\$200 in each year) to all eligible SC students in primary and secondary schools.
- This is on top of the **annual \$290** credited into the Edusave account for Secondary School students.



Funding Support for Non-Singapore Citizen Students

- Permanent residents (PR) and international students (IS) who need support could apply for subsidies, particularly those whose Gross Household Income (GHI) is below \$4400 or Per Capita Income (PCI)# is below \$1100.
- For more details, please approach the school. You may email to northland_ss@moe.edu.sg



What's Next




ICT Department

Northland Secondary School | *Learners who Share . Citizens who Care . Leaders who Dare .*

What's Next

For Singapore Citizens (SC) Students

Time Frame	Activity
By 6 Jan 2023, Friday	Indicate your consent for Procurement and Use of Edusave via the following link: https://go.gov.sg/pdlpadmin 
From March 2023	Collection of Devices by students (Parents will be informed via PG)

* **Parents Gateway** would be used to convey information and to facilitate the purchase.




ICT Department

Northland Secondary School | *Learners who Share . Citizens who Care . Leaders who Dare .*

What's Next

For Permanent Residents (PR) / International Students (IS)

Time Frame	Activity
By 6 Jan 2023, Friday	Indicate your consent for Procurement via the following link: https://go.gov.sg/pdlpadmin 
From February 2023	Parent/ Guardian to make payment via Giro / Cash/ Cheque.
From March 2023	Collection of Devices by students (Parents will be informed via PG)

* **Parents Gateway** would be used to convey information and to facilitate the purchase.

ICT Department

Northland Secondary School | *Learners who Share . Citizens who Care . Leaders who Dare .*



Collection of Devices

Your child/ward will be collecting his/her device in school from Term 2 2023.

If you would like to verify the condition of the device during collection with your child/ward:

- You may arrange to collect the device at the vendor's service/collection centre* or appoint an adult proxy to do so.
- Your child/ward would need to bring the device to school and arrange for the school's IT department to install the DMA.

Please approach the school for further advice or clarification if you would like to make this arrangement.



Important Contacts/ Helplines

To access/find out more about...	Contact/Helpline
Edusave Balance	6260 0777
Financial assistance available	6257 6781 (School's General Office)/ Email to northland_ss@moe.edu.sg
NDLP in Northland	Please email your queries to: northland_ss@moe.edu.sg

This deck of slides can be found on the school website:
<https://northlandsec.moe.edu.sg>



Frequently Asked Questions



ICT Department

Northland Secondary School | *Learners who Share . Citizens who Care . Leaders who Dare .*

1. Can my child NOT purchase the device?

Every student is required to have a device for teaching and learning purposes and is encouraged to purchase one through the school via MOE's bulk tender. Students are encouraged to use the device model prescribed by the school, as the uniformity of systems and software would ensure a smooth learning experience for everyone. The device purchased through the school will come with the necessary warranty and insurance as well.

2. Can my child NOT purchase the device as he/she has his/her own device?

Students are encouraged to use the model prescribed by the school for a smooth learning experience. If students wish to use their own devices, these devices must meet the necessary specifications stated by the school (Chromebook with stylus). They must also be willing to allow the school to install Device Management Application software to manage the device, similar to all school-selected devices.



THANK YOU



ICT Department

Northland Secondary School | *Learners who Share . Citizens who Care . Leaders who Dare .*

NSS Parent Support Group (PSG)



Learners who Share
Citizens who Care
Leaders who Dare

NSS Parent Support Group (PSG)



<https://go.gov.sg/nsspsgregistration2023>



Learners who
Citizens who
Leaders who

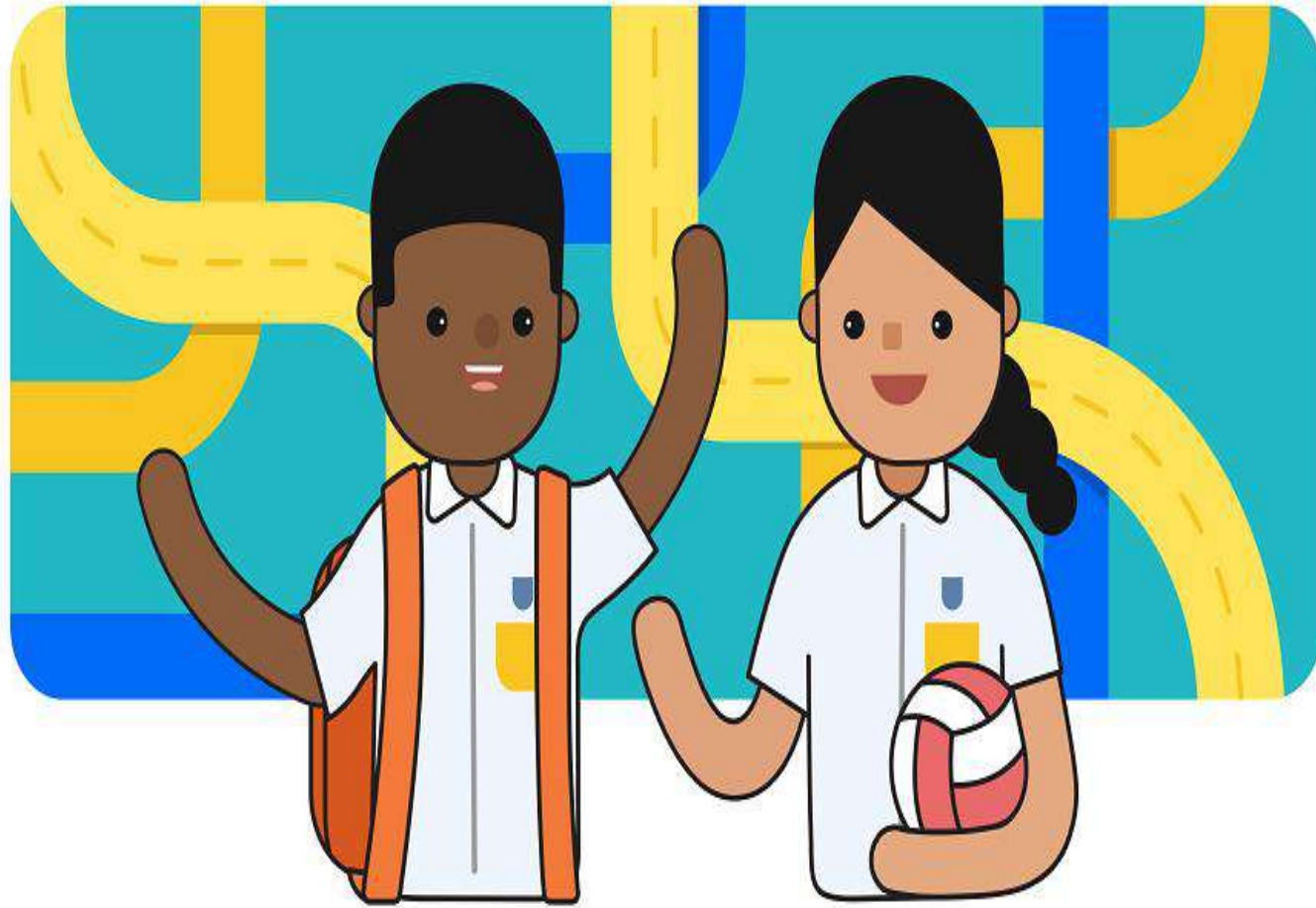
Full Subject Based Banding (FSBB) Briefing



Mdm Choi
HOD MTL



Learners who Share
Citizens who Care
Leaders who Dare



Full SBB at Northland

For implementation in 2023

INFORMATION FOR PARENTS

SECONDARY 1 REGISTRATION

23 DECEMBER 2022

Full Subject Based Banding



What is FSBB?



One Secondary Education,
Many Subject Bands.

Full SBB

Objectives of FSBB

Recognise students'
**Strengths and
Interests** in learning

Build **Confidence**
and an **Intrinsic
Motivation** to
Learn for Life

Enable students to
chart their own
**varied
development
pathways**

What will Full SBB in 2023 look like?

Mixed form classes
with the provision of
a common
curriculum

Common Curriculum (taken by all in the same form class)	SBB Subjects (offered to students at three different bands)
<ul style="list-style-type: none">• Art• Design and Technology• Food and Consumer Education• Character and Citizenship Education• Music• Physical Education	<ul style="list-style-type: none">● English Language● MTL● Mathematics● Science● Humanities* - History, Geography, Literature <p><i>*(option to offer Humanities subjects at a more demanding level will only be available from Secondary 2 onwards)</i></p>

What will Full SBB in 2023 look like?

Students will be able to take a **range of subjects** at G1, G2 and G3 based on their abilities, strengths and interests.

Subject Bands	Maps to existing:
G1	Normal Technical standards
G2	Normal Academic standards
G3	Express standards

Students posted to the **N(A)** or **N(T)** course are eligible to take EL, Math, Science and MTL at more demanding level starting from Secondary 1 if they have performed well in these subjects at the PSLE

Option to
offer the
subject at

PSLE
Subject Grade

G2

AL6 or better in a Standard level subject
Or **AL A** in Foundation level Subject

G3

AL5 or better in a Standard level subject

One Secondary Education, Many Subject Bands

With Full SBB, students can take subjects at G1/G2/G3 academic levels, which are mapped from today's N(T)-, N(A)-, and O-Level subjects respectively.

Start of Sec 1

Subject levels are assigned based on PSLE results

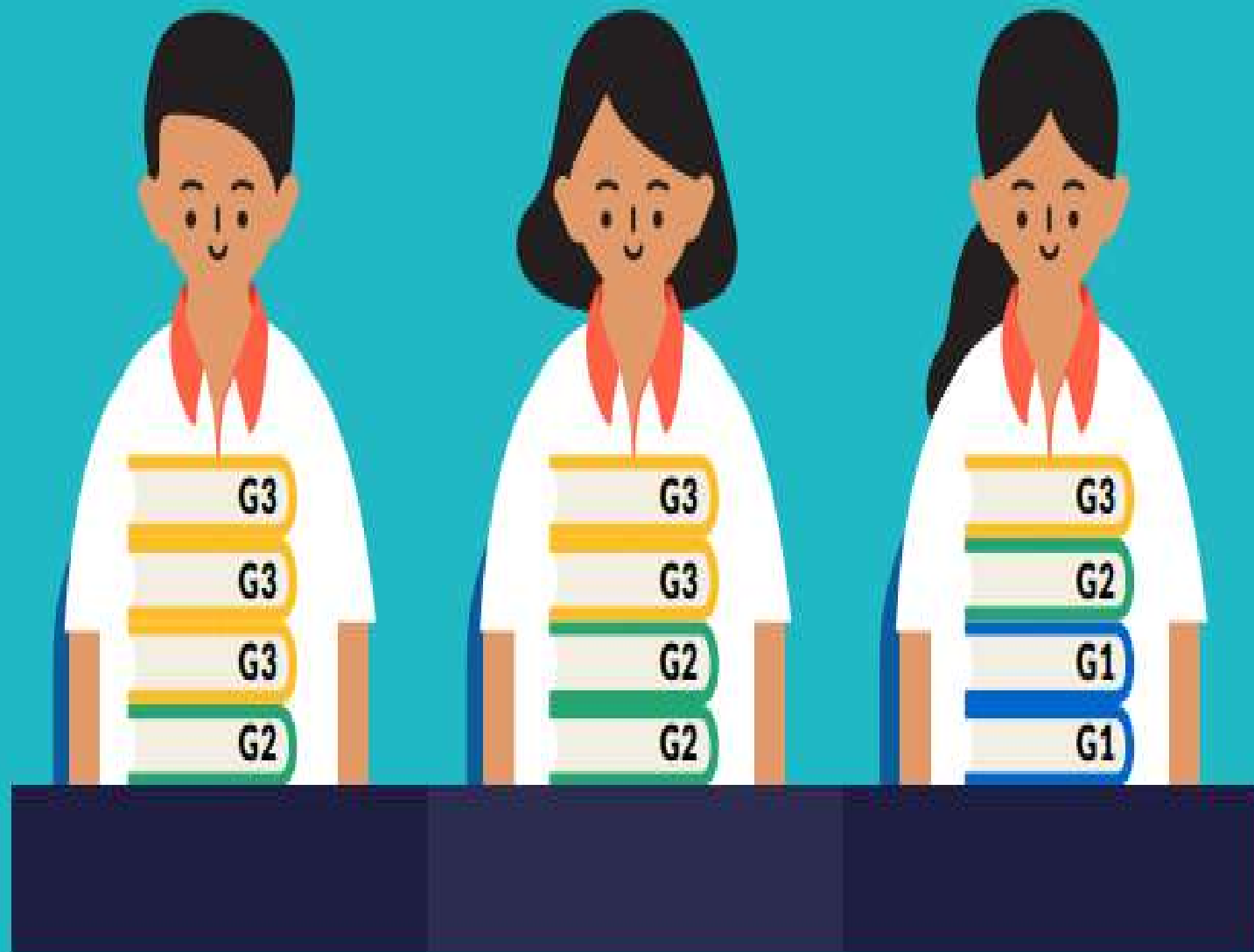


Beyond Start of Sec 1

Subject levels depend on students' abilities

Students who do well in school-based examinations may be considered to take higher-level subjects if found suitable to do so by our school.

Our school will provide support through bridging programmes for these new SBB students.



What are the possible benefits of taking SBB subjects?

SBB allows the students to challenge themselves, and to have more options for Sec 3 subject combinations and post-secondary courses.

A strong foundation in literacy, numeracy and reasoning, would ensure students are better prepared for various post-secondary progression pathways

**POST-
SECONDARY
EDUCATION**

Pursuing pathways that fit your
interests, abilities and aspirations



How are marks converted for SBB subjects at National Examination?

O-Level/ G3	N(A)- Level/ G2
A1-B3	1
B4-C6	2
D7	3
E8	4
9	5
	6 (U*)

N(A)- Level/ G2	N(T)- Level/ G1
1	A
2	A
3	A
4	B
5	C
6 (U*)	D
	E (U*)

What if my child struggles with the SBB subject?

Students are encouraged to continue with the SBB subjects until the end of Sec 2, as students do need time to adjust to the higher academic demands.

Our school will monitor students' academic progress and will endeavour to provide best support for students' academic and socio-emotional needs.

TODAY

MENU ▾



A struggle at first, but taking higher-level subjects helped boost confidence

By FARIS MOKHTAR



Jurong Secondary student Ismahani Azmi, 15, struggled with taking higher-level subjects when she first entered secondary school, but has seen her confidence blossom from the experience, with some help from her teachers, including Mdm Siti Hawa Zaini, her Malay language teacher (seated). PHOTO: FARIS MOKHTAR

Published 07 MARCH, 2017

Acceptance of SBB Offer

Parents/Guardians of eligible 1NA and 1NT students will be notified via Parents Gateway (PG) or email for those not on board PG.

Parents are to access the **All Ears link** stated in the letter and accept the offer by giving consent **via All Ears** by **Tuesday, 27 Dec 2022**.



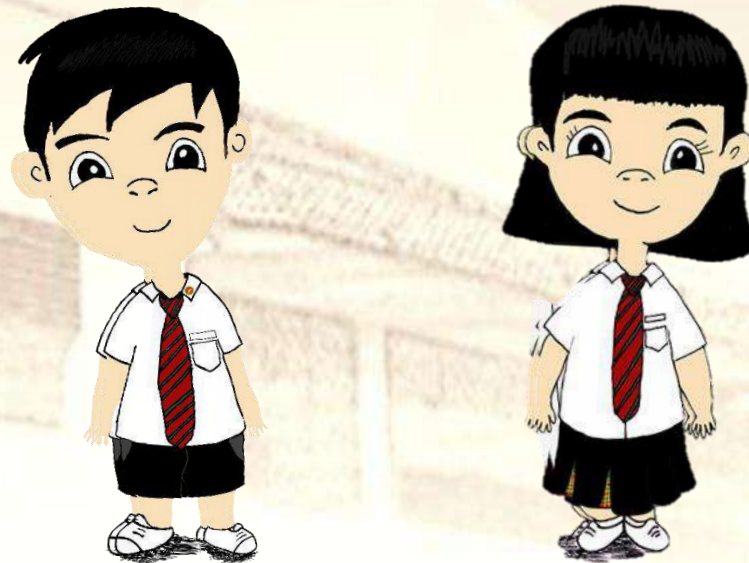
<https://for.edu.sg/nsssbbofferletter>



FSBB @ Northland 2023

For enquiries, please contact
Mdm Choi Pei Ling (HOD/MTL) at
choi_pei_ling@schools.gov.sg
6257 6781 (ext 205)

Northland Secondary School Meet & Greet Session with CMs 23 December 2022



Learners who Share
Citizens who Care
Leaders who Dare

First Day of School

3rd Jan 2023, Tuesday

- Report to school **by 0725hrs** at the **Hall** in Northland School Uniform (including collar pin).
- *Students who have not purchased their school uniform in time, may report in their primary school uniform during the 1st week of school.*
- Ensure that your grooming is neat and proper.

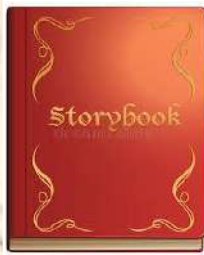


Learners who Share
Citizens who Care
Leaders who Dare



Take a photo of
this slide.

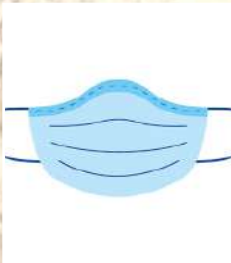
Checklist for **First Day of School** **3rd Jan 2023**



Storybook



Stationery



Additional Face
Mask



School Bag



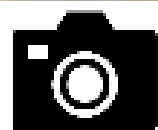
Water Bottle



Positive Attitude
towards school



Learners who S
Citizens who C
Leaders who Dare



Take a photo of
this slide.

First Week of School

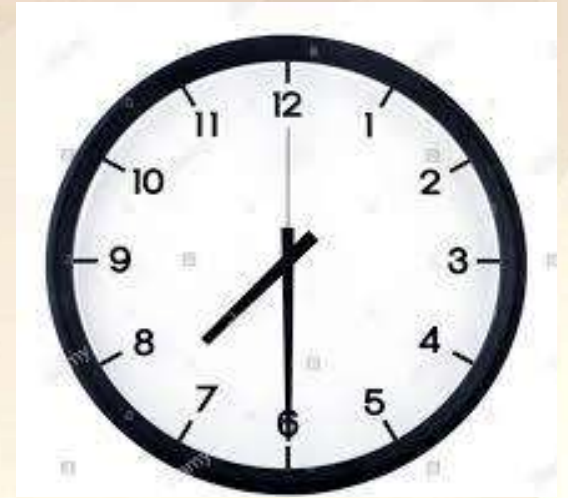
3rd - 6th Jan 2023

Day/ Date	Tuesday 3 Jan	Wednesday 4 Jan	Thursday 5 Jan	Fri 6 Jan
Activities	Start Right 1 – Sec 1 Orientation Programme <ul style="list-style-type: none"> Talks by School Leaders SPARCLE Lessons (a.k.a. Form Teacher Guidance Period/CCE Lessons) Briefings for students on Student Development matters Bonding sessions including sports activities with Classmates and Class Mentors Secondary 1 Induction Ceremony (Friday 1200 -1240) 			
				CCA Exhibition(2pm – 4pm) Tea-break (4pm-4.30pm) Sec 1 Parent Evening (4pm-6pm)
Reporting Time	7.25am			
Break	Recess Lunch	Recess	Recess	Recess Lunch (12.45pm -2pm)
Dismissal Time	3.30pm	1.30pm		6.00pm

Other Useful Information

(2 Week Timetable(Odd/Even))

- **Reporting Time:** 7.25am
- **Recess :**
 - 40 mins break
- **Dismissal Time:** 12.40 – 3.20pm
 - Depending on subject combination
 - Refer to timetable for details (issued at the end of Week 1)



Learners who Share
Citizens who Care
Leaders who Dare

Other Useful Information

[Canteen Food]

Canteen Food

- **The school canteen provides a wide variety of Muslim and non-Muslim food, which includes bread, rice and noodles.**
- **Canteen vendors also provide fruits, fruit juices, hot beverages and bottled drinks.**
- **A typical lunch in the school should not cost more than \$3.00, excluding beverage.**



Learners who Share
Citizens who Care
Leaders who Dare

Other Useful Information

[CCA]

CCA – Mostly every Friday

- CCA duration is between 2 - 3 hours depending on the type of CCA.
- Modality: Face-to-Face or e-CCA
- All CCAs will end by 6pm. More information will be provided by the CCA teacher-in-charge.



Learners who Share
Citizens who Care
Leaders who Dare

Other Useful Information



NSS CCA WEBSITE

Home

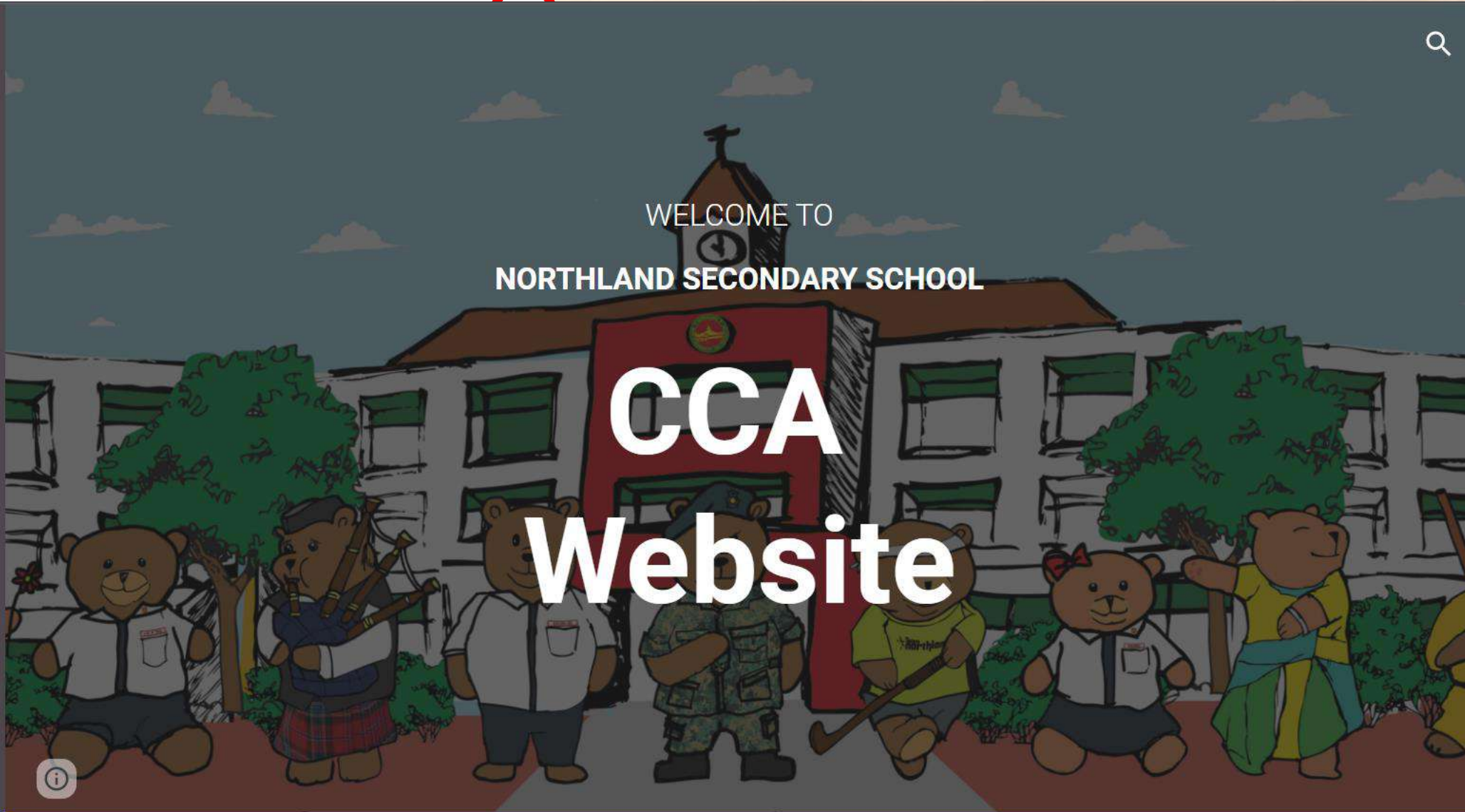
CCA @ Northland

eCCA @ Northland

✓ Our CCA Groups Links

✓ For Students

✓ For Teachers/Instructors



Meet & Greet Session with the Guidance Team



Mr Mohamed Ibrahim Sirajuddin
Special Education Needs Officer

Email: mohd_ibrahim@moe.edu.sg
Tel: 62576781 (Ext. 121) or 91783921



Mr Abdul Razak Masiran
Head of Department Education Support
In-charge of Student Welfare

Email: abdul_razak_masiran@moe.edu.sg
Tel: 62576781 (Ext. 206)



Ms Joanne Yap
Subject Head Education Support
Assistant Year Head

Email: yap_qian_hui@moe.edu.sg
Tel: 62576781 (Ext. 116)



Queries

Subject Based Banding (SBB) & Higher Mother Tongue Language (HMTL)

- Parents of students eligible for SBB and/or HMTL, would receive the SBB Option Form via Parents Gateway.
- For clarifications or queries, you may contact
Mdm Choi Pei Ling, HOD MTL via
 - Email: choi_pei_ling@moe.edu.sg
 - Tel: 62576781 (Ext. 205)



Learners who Share
Citizens who Care
Leaders who Dare

***See you on 3rd January 2023 (Tues)
at 0725hrs in the School Hall***

***thank
you!***



Learners who Share
Citizens who Care
Leaders who Dare