

# Northland Secondary School Secondary One Registration 22 December 2023



Learners who Share  
Citizens who Care  
Leaders who Dare

# Welcome to Northland Family



Learners who Share  
Citizens who Care  
Leaders who Dare

# Programme Overview

<b>TIME</b>	<b>PROGRAMME</b>
<b>0830</b>	<b>Pre-Registration</b>
<b>0900</b>	<b>Welcome Address by Principal</b>
<b>0910</b>	<b>Welcome address and admin brief by AYH</b>
<b>0925</b>	<b>Full Subject Based Banding Briefing</b>
<b>0935</b>	<b>Briefing on NDLP</b>
<b>0945</b>	<b>Welcome by Parent Support Group</b>
<b>0950</b>	<b>End of Webinar Parents to make their way to classroom block</b>
<b>1000</b>	<b>'Meet &amp; Greet' with CMs (F2F in classroom and via zoom)</b>
<b>1045</b>	<b>'Meet &amp; Greet' with Guidance team for selected parents @ LBS room</b>
<b>1100</b>	<b>Registration ends</b>

Learners who Share  
Citizens who Care  
Leaders who Dare





# Welcome Address by Principal



**Mr Lim Kok Hwa**



Learners who Share  
Citizens who Care  
Leaders who Dare

# The People of Northland Secondary

## Northstar

A term of endearment for students of Northland Secondary.



## Starmaker

The competent & caring staff of Northland Secondary



# Our Value Proposition for Northstars



Northland Secondary, *an inviting school with a positive schooling experience* that brings out the best in Northstars to be **Learners who Share, Citizens who Care and Leaders who Dare**



# What We Strive to Achieve

- Northland Secondary a second home for Northstars, where they feel safe and cared for**
- Northstars are Life-Long Learners who are Future-Ready**
- Northstars of Character and Values**
- High Expectations, High Support, High Care for Northstars**

# What's New in Secondary School?

**1** Depth & Breadth of Curriculum

**2** CCA is Compulsory

**3** A Personal Learning Device



# How Can Parents Help Their Child?

**1**

Be an Active Partner in Education

**2**

Journey with your Child

**3**

Establish routines & boundaries for your child

# Guiding Philosophy & Beliefs

## **Northland an Inviting School**

- Safety & Well-Being a Priority
- Conducive environment for teaching, learning and work

## **Starmakers Our Pride**

- Starmakers are Northland's most important assets
- Starmakers make the difference!

## **Northstars Our Focus**

- Northstars at the centre of everything we do
- Every Northstar matters



Thank You



# Briefing on Administrative Matters by Assistant Year Heads



**Mdm Nurliyana**



**Mr Abudaher**



Learners who Share  
Citizens who Care  
Leaders who Dare



ABOUT NORTHLAND ▾

ACADEMIC CURRICULUM ▾

STUDENT MATTERS ▾

SEC 1 REGISTRATION 2024 ▾

STUDENT DEVELOPMENT CURRICULUM ▾

USEFUL LINKS ▾

PART



*we are*

# A CONSTELLATION OF NORTHSTARS

NORTHLAND SECONDARY SCHOOL  
Sec 1 Registration  
22 December (Friday),  
8.30am to 11am



Please scan the QR code or go to <https://go.gov.sg/2024sec1registration> to post your queries pertaining to the Sec 1 registration prior to the webinar. You can click on the Sec 1 Registration link below for more details

**EVENTS**  
Featured Stories

**SECONDARY 1 REGISTRATION**  
[Click here for more info](#)



Learners who Share  
Citizens who Care  
Leaders who Dare



# Welcome

## Welcome

---

[Purchase of Books](#)

---

[Sec 1 Booklist](#)

---

[Purchase of Uniform](#)

---

[Financial Assistance Scheme \(FAS\)](#)

---

[Full Subject Based Banding \(FSBB\)](#)

---

[Appeal for Transfer to Northland Secondary School \(Non Medical\)](#)

---

[Frequently Asked Questions \(FAQ\)](#)

---



Congratulations on your posting to Northland Secondary School (NSS) to commence your secondary school education, as a Northstar. It will be a new phase of your development and we





# Purchase of Books - Booklist

Subject Bands	Maps to:
G1	Normal Technical standards
G2	Normal Academic standards
G3	Express standards



Learners who Share  
Citizens who Care  
Leaders who Dare

# Purchase of Books



Take a photo of  
this slide.

MODE	ONSITE PURCHASE (BOOKSHOP)	ONLINE ORDER (Home Delivery OR Self Collection)*strongly encouraged
DATES	22 December 2023 (Fri) 26 December 2023 (Tue) _Only for FAS 27 December 2023 (Wed) – 29 December 2023 (Fri) Priority queue will be given to those with appointment.	Last Day of Order: 27 December 2023  <a href="https://www.pacificbookstores.com/">https://www.pacificbookstores.com/</a>
BUSINESS OPERATION HOUR	Mon - Fri (9am - 3pm) Sat (9am - 12pm) Lunch time (12pm - 1pm)	



Learners who Share  
Citizens who Care  
Leaders who Dare

# Purchase of Uniform



Take a photo of  
this slide.

MODE	ONSITE PURCHASE (School)	ONLINE ORDER (Home Delivery OR Self Collection)*strongly encouraged
DATES	22 December 2023 (Fri) 26 December 2023 (Tue) _Only for FAS 27 December 2023 (Wed) – 29 December 2023 (Fri) Appointment required for onsite purchase  Alternatively, you may also visit store at 604 Sembawang Shopping Centre, #02-13	Last Day of Order: 28 December 2023  <a href="https://www.euniforms.com.sg/shop/product-category/secondary-schools/nlss/">https://www.euniforms.com.sg/ shop/product- category/secondary- schools/nlss/</a>
BUSINESS OPERATION HOUR	Mon - Fri (9am - 3pm) Sat (9am - 12pm) Lunch time (12pm - 1pm)	



Learners who Share  
Citizens who Care  
Leaders who Dare



# Financial Assistance Scheme Application

## Successful application

- Email to the school and indicate whether you require transport subsidy.
- Collection date for books and uniform will be made known via email

## New application

- Submit an online form through the school website
- You will be notified by the school of the outcome once the FAS form is processed



Learners who Share  
Citizens who Care  
Leaders who Dare

# Administration – Part 1

- Please download Parents Gateway (PG) if you have not done so.  
(Refer to school website)





Take a photo of  
this slide.

# Administration – Part 2

Forms for Completion	Weblinks/QR Code	Deadline
1. Secondary 1 Registration 2024  (For all students)	  <a href="https://go.gov.sg/student-dataform2024">https://go.gov.sg/student dataform2024</a>	26 December 2023



Learners who Share  
Citizens who Care  
Leaders who Dare





Take a photo of  
this slide.

# Administration – Part 2

Forms for Completion	Weblinks/QR Code	Deadline
2. National Digital Literacy Programme (NDLP)  (For all students)	 <a href="https://go.gov.sg/pdlpadmin">https://go.gov.sg/pdlpadmin</a>	05 January 2024



Learners who Share  
Citizens who Care  
Leaders who Dare



Take a photo of  
this slide.

# Administration – Part 2

Forms for Completion	Weblinks/QR Code	Deadline
<p>3. Registration Form for Parent Support Group</p> <p>(For parents who are interested in joining the PSG)</p>	 <p><a href="https://go.gov.sg/nsspssg_registration2024">https://go.gov.sg/nsspssg_registration2024</a></p>	<p>31 December 2024</p>



Learners who Share  
Citizens who Care  
Leaders who Dare

# Art Elective Programme (AEP) or Music Elective Programme (MEP)

## What are the **Art & Music** Elective Programmes (**AEP/MEP**)?

- Special MOE programmes started since 1982 for students with **passion** and **aptitude** in art/music so that they can further **deepen** their knowledge, skills and appreciation in these areas
- Develops students to be **well-rounded leaders** who are advocates for the arts
- Provide **enriched art/music learning environment** for students to pursue in-depth study into art/music



Learners who Share  
Citizens who Care  
Leaders who Dare



# Art Elective Programme (AEP)



AEP

## Art Elective Programme (AEP) 4-year (Sec 1 – Sec 4)

The **AEP curriculum** aims to develop students as practitioners, scholars, advocates and leaders in the arts. The curriculum includes:

- An extended and balanced art curriculum comprising studio practice and art criticism components.
- Exposure to a range of art materials, media and creative processes.
- Access to specialised studio facilities, equipment and resources.
- Collaborative learning experiences with other AEP students through combined schools events and workshops.
- Opportunities to learn from arts industry professionals, and higher education students and staff about the arts and creative industries.
- Opportunity to offer G3 Higher Art\*.

*\*For the 2027 graduating cohort who will be sitting for the new Singapore-Cambridge Secondary Education Certificate (SEC) examinations, they will be offering G3/G2/G1 syllabuses and exams, which map to the current O/N(A)/N(T)-Level syllabuses and exams respectively across all subjects.*



Learners who Share  
Citizens who Care  
Leaders who Dare

# AEP CENTRES

## Schedule & Lesson Timing (2024 cohort)

AEP Centre	Lower Sec	Upper Sec
<b>National Junior College</b> 37 Hillcrest Road, Singapore 288913	<b>Tuesdays</b> (3.00 – 6.00pm)	<b>Thursdays</b> (3.00 – 6.00pm)

## Find out more!

Programme	Weblinks
<b>AEP</b>	<a href="https://moe.gov.sg/aep">https://moe.gov.sg/aep</a>

*The schedule reflected here may be subject to change.*



<https://go.gov.sg/2024-aep>



Learners who Share  
Citizens who Care  
Leaders who Dare

# MOE Music Programmes



MEP

## Music Elective Programme (MEP) 4-year (Sec 1 – Sec 4)

The **MEP curriculum** aims to develop students as practitioners, scholars, advocates and leaders in the arts. The curriculum includes:

- An extended and balanced music curriculum that develops skills in Listening, Creating, Performing and Research
- An in-depth study of Asian, Classical, Jazz, Popular and Multimedia genres
- Access to specialised facilities such as practice studios, music technology equipment and other resources (e.g. scores and audio-visual materials)
- Opportunities to learn and collaborate with MEP and EMP students from other schools
- Opportunities to learn from music industry professionals through masterclasses and studio sessions
- Opportunity to offer G3 Higher Music\*.



Learners who Share  
Citizens who Care  
Leaders who Dare

*\*For the 2027 graduating cohort who will be sitting for the new Singapore-Cambridge Secondary Education Certificate (SEC) examinations, they will be offering G3/G2/G1 syllabuses and exams, which map to the current O/N(A)/N(T)-Level syllabuses and exams respectively across all subjects.*



# MEP CENTRES

## Schedule & Lesson Timing (2024 cohort)

	Centres	Lower Sec	Upper Sec
<b>MEP</b>	<b>Anglo-Chinese School (Independent)</b> 121 Dover Road, Singapore 139650	<b>Thursdays</b> (3.30 – 5.30pm)	<b>Fridays</b> (3.00 – 6.30pm)
	<b>Dunman High School</b> 10 Tanjong Rhu Road, Singapore 436895	<b>Wednesdays</b> (3.30 – 5.30pm)	<b>Mondays (Sec 3)</b> (3.30 - 6.45pm) <b>Wednesdays (Sec 4)</b> (3.30 – 6.45pm)

Find out more!

Programme	Weblinks
<b>MEP</b>	<a href="https://moe.gov.sg/mep">https://moe.gov.sg/mep</a>

*The schedule reflected here may be subject to change.*



<https://go.gov.sg/2024-mep>



Learners who Share  
Citizens who Care  
Leaders who Dare

# CCA Exhibition & Parent Evening

**Date: 5 Jan (Friday)**

**Time: 2 pm – 4pm (CCA Exhibition)  
4pm – 6pm (Parent Evening)**

**Venue: School Hall**

**Please reply via Parents Gateway  
by 27 December 2023.**



Learners who Share  
Citizens who Care  
Leaders who Dare

# Full Subject Based Banding (FSBB)



**Mdm Choi**  
**HOD MTL**



Learners who Share  
Citizens who Care  
Leaders who Dare



# What is Full Subject-Based Banding?

- Full Subject-Based Banding (Full SBB) is part of MOE's ongoing efforts to **nurture the joy of learning** and **develop multiple pathways** to cater to the different strengths and interests of our students.
- With Full SBB, we are moving towards a secondary school education where **students learn each subject at the level that best caters to their overall strengths, interests and learning needs.**

# Rationale of Full SBB

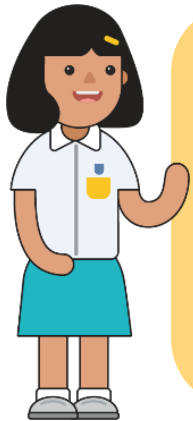
Full SBB aims for students to:



Have **greater ownership of their learning** according to their strengths, interests, abilities, talents and learning needs



Develop a **growth mindset and an intrinsic motivation** to learn for life



Have **more opportunities to interact with friends** of different strengths, interests, abilities and talents

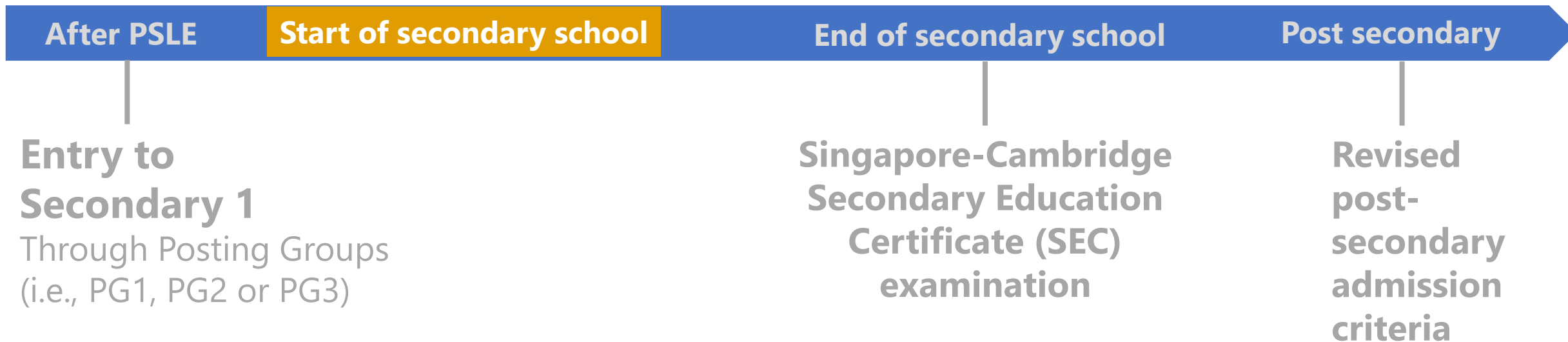


Have **more options for post-secondary pathways**, while ensuring they have strong fundamentals and can thrive in their chosen pathway

# Secondary school experience under Full SBB

## Secondary school experience

1. Mixed form classes upon entering secondary school
2. Common curriculum subjects at lower secondary
3. Subjects to be offered at G1, G2 or G3, mapped from the standards of the N(T), N(A) and Express subject levels respectively
4. Greater flexibility to offer subjects at various subject levels
5. Shift away from stream-based subject offerings





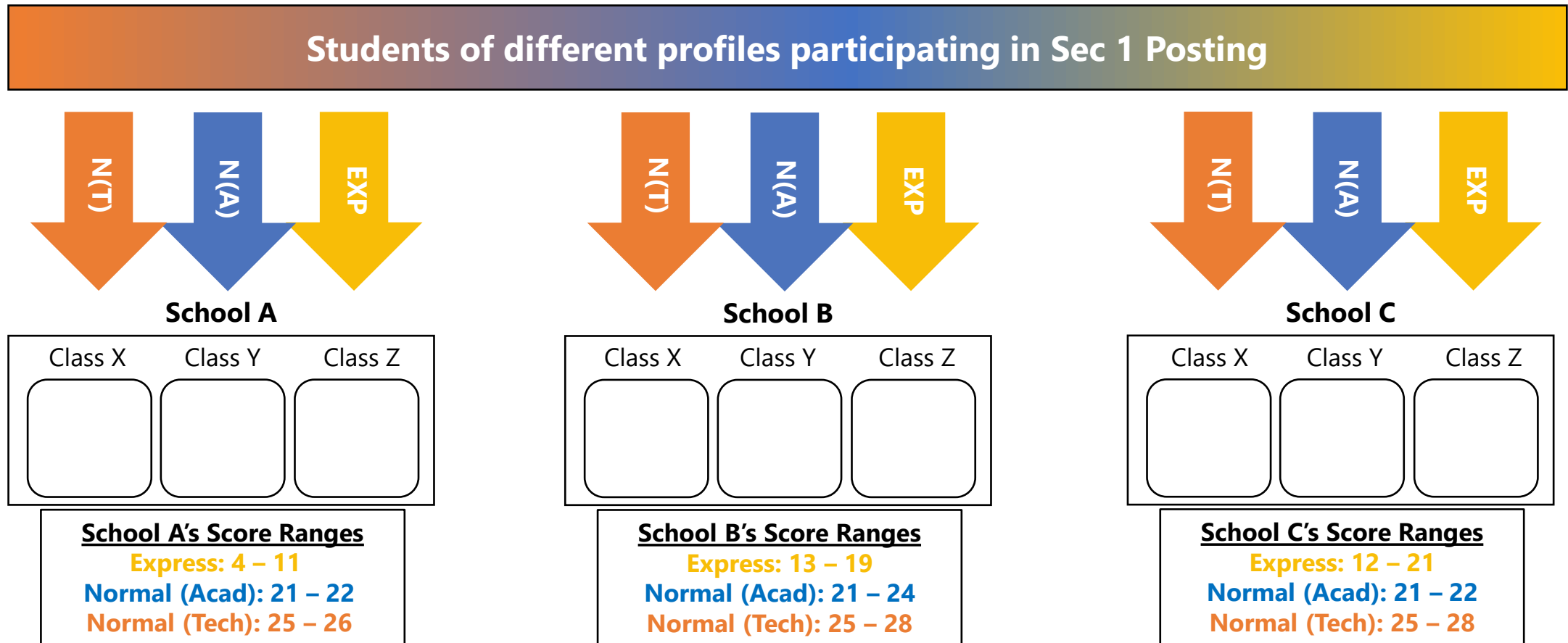
# Posting Groups and Subject Levels

- Students will be posted to Secondary 1 through **three Posting Groups – Posting Group 1, 2, and 3.**
- **Posting Groups will only be used for:**
  - Facilitating entry into secondary school.
  - Guiding the subject levels students offer at the start of Secondary 1.
    - They do not define students' identities, nor influence learning experiences and access to post-secondary pathways.

PSLE Score	Posting Groups	Indicative level of most subjects at start of Secondary 1
4 – 20	PG3	G3
21 and 22	PG2 or PG3	G2 or G3
23 and 24	PG2	G2
25	PG1 or PG2	G1 or G2
26 – 30 (with AL 7 in EL and MA)	PG1	G1

# Mixed Form Classes in Lower Secondary

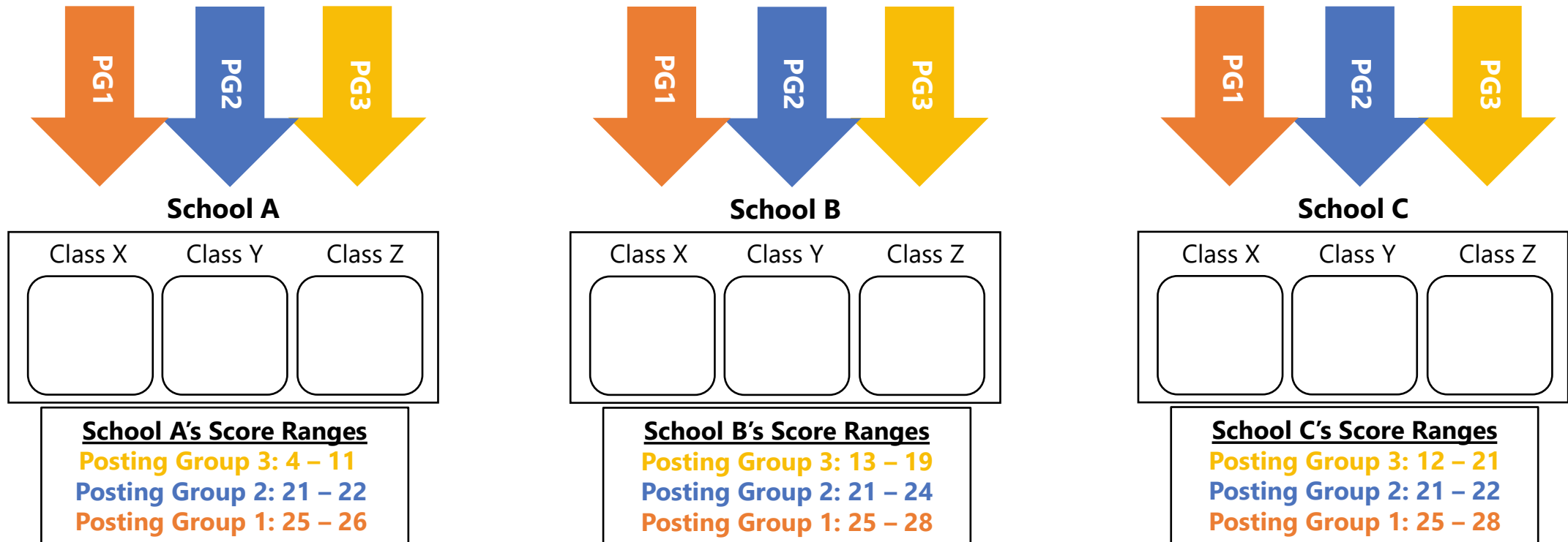
- Prior to Full SBB implementation, students are arranged in stream-based form classes and interact with peers of similar profiles.



# Mixed Form Classes in Lower Secondary

- With Full SBB, students will be placed in mixed form classes in lower secondary.
- More opportunities for students to interact with other students of different strengths.

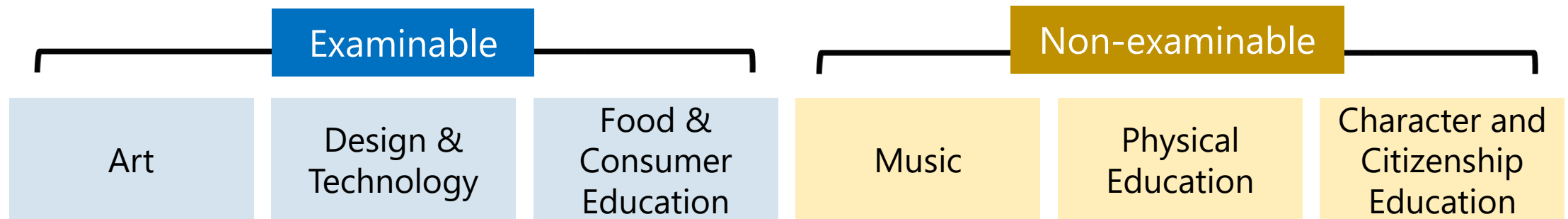
Students of different profiles participating in Sec 1 Posting





# Common Curriculum Subjects

- Students will take six common curriculum subjects with their form class classmates:



- These subjects take up approximately one-third of curriculum time, giving students time to interact with classmates of different strengths and interests.

# Subject Levels under Full SBB

- Students can offer different subjects at different subject levels (i.e., G1, G2 or G3) according to their strengths, interests and learning needs, throughout their secondary school journey.
- These subject levels, G1, G2 or G3, are mapped from the standards of N(T), N(A) and Express subject levels respectively.

# Lower Secondary Subject Offerings

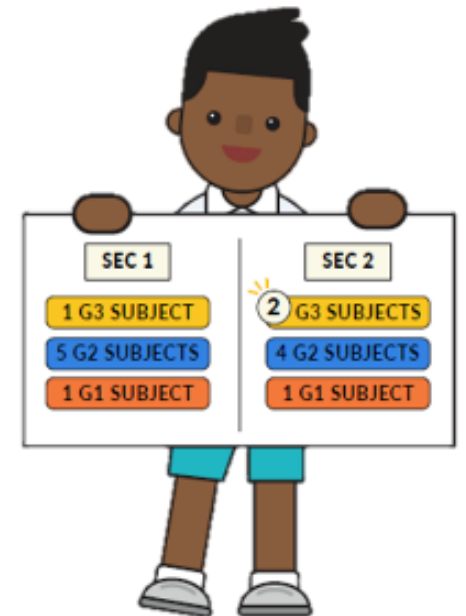
<b>Examinable subjects</b>	<b>G1</b>	<b>G2</b>	<b>G3</b>
English Language			
Mother Tongue Languages			
Mathematics			
Science			
Humanities (Geography)			
Humanities (History)			
Humanities (Literature in English)			
Art	<b>Common Curriculum Subjects</b>		
Design & Technology			
Food & Consumer Education			
<b>Non-examinable subjects</b>	<b>G1</b>	<b>G2</b>	<b>G3</b>
Character and Citizenship Education & Assembly	<b>Common Curriculum Subjects</b>		
Physical Education			
Music			
G1 Humanities (Social Studies, Humanities Exposure Modules)			



# Subject Levels under Full SBB

- Students are required to take compulsory subjects at G1, G2 or G3.
- Subject level at the start of Secondary 1 is based on their PSLE Score and indicated by Posting Groups.

PSLE Score	Posting Groups	Indicative level for most subjects at start of Secondary 1
4 – 20	PG3	G3
21 and 22	PG2 or PG3	G2 or G3
23 and 24	PG2	G2
25	PG1 or PG2	G1 or G2
26 – 30 (with AL 7 in EL and MA)	PG1	G1



# Offering Subjects at More Demanding Levels



- For **English Language, Mother Tongue Languages, Mathematics and/or Science**, students can offer them at the start of Secondary 1 at a more demanding level if they meet the eligibility criteria.

## Eligibility criteria for English Language, Mathematics, Science, Mother Tongue Languages

Posting Group	PSLE Standard grade	PSLE Foundation grade	Option to offer subject at
PG2	AL 5 or better	-	G3
PG1	AL 5 or better	-	G2 / G3
	AL 6	AL A	G2

## Eligibility criteria for Higher Mother Tongue Languages

- An overall PSLE Score of 8 or better  
or  
An overall PSLE Score of 9 to 14 (inclusive);  
and attain
- AL 1/AL 2 in Mother Tongue Language;  
or
  - Distinction/Merit in Higher Mother Tongue Language

- Students can offer **Humanities subjects** at a more demanding level from Secondary 2 onwards, based on their results in Secondary 1.

# Offering Subjects at Less Demanding Levels



- Eligible students may offer some subjects at a less demanding level from Secondary 1.
- Students who offer subjects at a less demanding level may subsequently offer the subject at a more demanding level as they gain greater competence and confidence in the subject.



# Offering Subjects at Less Demanding Levels

- Students can offer to take subjects at a less demanding level based on the following considerations:

## Mother Tongue Languages:

Indicative level of most subjects at start of Secondary 1	PSLE Grade (Standard Mother Tongue Language)	PSLE Grade (Foundation Mother Tongue Language)	Option to offer at
G3	AL 6	AL A	G2
	AL 7-8	AL B-C	G1 or G2
G2	AL 7-8	AL B-C	G1

## English Language, Mathematics and/or Science:

Indicative level of most subjects at start of Secondary 1	PSLE subject level for English Language, Mathematics and/or Science	Option to offer at
G3	Foundation level	G2

# Subject Level Flexibility Throughout Secondary Education

- Beyond the start of Secondary 1, students may adjust their subject levels across their secondary school journey.
  - E.g. Students can also offer English Language, Mathematics, Science and/or Mother Tongue Languages at a more demanding level from Secondary 1 Semester 2.

<b>Current subject level</b>	<b>School-based results</b>	<b>Option to offer subject at</b>
G1	≥75% in the specific subject	G2 starting from next semester
G2	≥75% in the specific subject	G3 starting from next semester

# Subject Level Flexibility Throughout Secondary Education

- In upper secondary, students may offer **elective subjects** (e.g. Additional Mathematics, Art, Design & Technology) at a subject level suited to their strengths, interests and post-secondary aspirations.



# Progression to Secondary 2

- All students will generally progress to Secondary 2.
  - Teachers will check in with students and parents to discuss the subjects and respective subject levels that best suit the student.
- Students can offer certain subjects at a more demanding level based on his/her interest and learning progress.



# What's next?



Secondary 1 & 2

End of Secondary 2

Secondary 3 & 4

## Deciding on upper secondary subject combinations

All students will offer between 5 and 9 examinable subjects for upper secondary.

## Upper secondary

Students will continue to have flexibility to offer subjects at different subject levels, including elective subjects.

# What's next?

## End of Secondary 4/5

### Singapore-Cambridge Secondary Education Certificate (SEC) Examination

From 2027, students will sit for the new SEC examinations, with different papers for each subject level.

5<sup>th</sup> year of secondary education will continue to be available for eligible students.

- This allows them to pace their learning and possibly offer subjects at a more demanding level to access more post-secondary pathways.

## Post-Secondary

### Admission to post-secondary education institutes

Admission criteria have been progressively updated to recognise students taking different combinations of subjects and subject levels.

- E.g., Polytechnic Foundation Programme (PFP) has been expanded to allow access to students offering G3 subjects, or a mix of G2 and G3 subjects.



# **Supporting your child through their Secondary School Journey**



# How can you support your child?

- **Learn more about their strengths, skills, interests, learning styles and aspirations.**
- **Encourage your child to be open and think about possible education and career opportunities.**
  - There are many post-secondary education options for students to explore. Find one that best suit their strengths, skills, interests and learning styles.

# How can you support your child?

**Support**

**Affirm**

**Familiarise**

**Empathise**

# How can you support your child?

- Here's how you can journey with your child:
  - **Connect with them**
    - Set aside time to listen and understand how they are coping with school and CCA, their thoughts and feelings.
    - Create opportunities outside of school that would help you and your child recognise their interests, skills, strengths and learning styles.
  - **Support them to learn for life**
    - Stay open to the possible education and career pathways that are available and be flexible in discussing these pathways with them.
    - Trust their abilities to grow to become better versions of themselves, while being careful not to project your expectations on them.
    - Encourage them to take ownership of their goals and plans.

# Resources

## Parent Kit – Supporting Your Teen in Exploring Post-Secondary Pathways



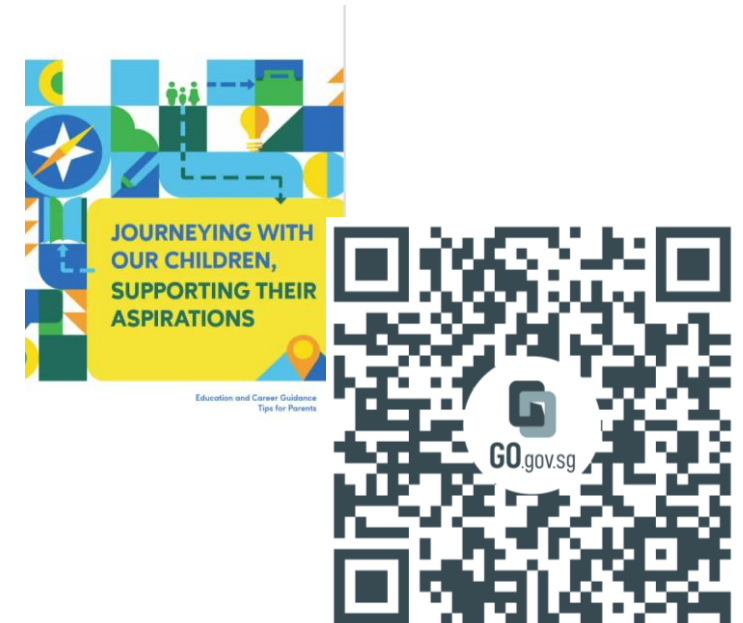
<https://go.gov.sg/moe-post-secondary-2022>

## Video – Heart to Heart Talk



<https://go.gov.sg/h2hstep2>

## ECG Tips for Parents



<https://go.gov.sg/tips-for-parents>





**Find out more about Full SBB**

# Visit the Full SBB Microsite

<https://go.gov.sg/moe-fsbb>



## What is Full SBB?

Full SBB is part of MOE's ongoing efforts to nurture the joy of learning and develop multiple pathways to cater to the different strengths and interests of our students.



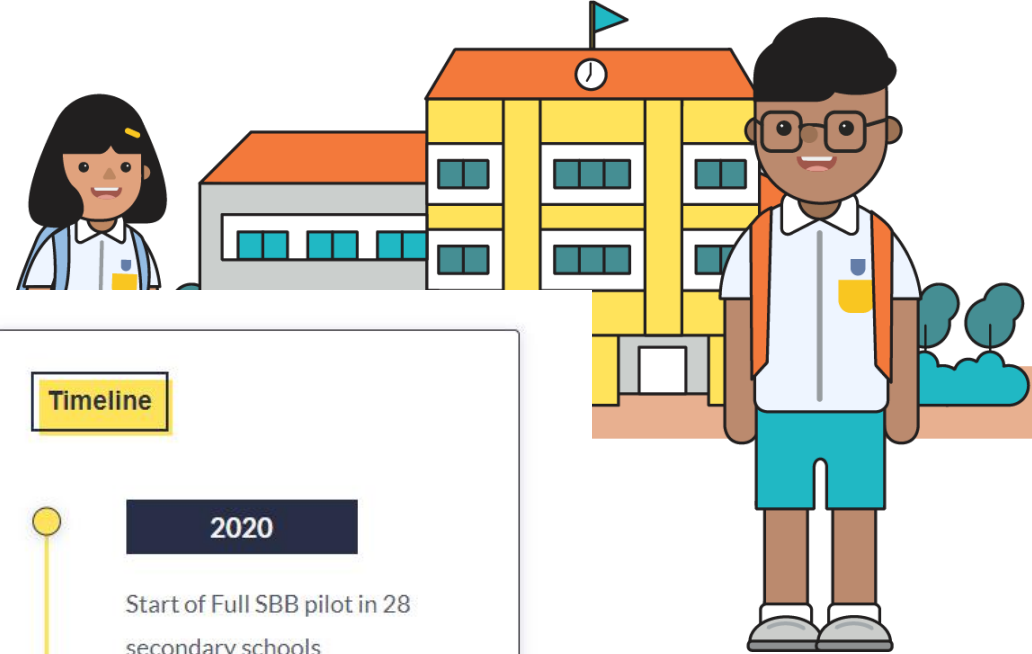
## Secondary school experience under Full SBB

Find out more about Secondary 1 postings, form classes, subject offerings, Common Curriculum and other changes under Full SBB.



## FAQ

Read this list of commonly asked questions and answers on Full SBB.



## Timeline

2020

Start of Full SBB pilot in 28 secondary schools

2021

First cohort of Primary 6 students undergo new PSLE scoring and Secondary 1 (S1) posting system

2022-2024

Progressive roll-out of Full SBB to more secondary schools

2027

# Find out more about Full SBB

## Microsite



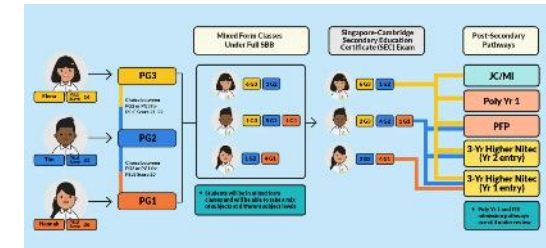
<https://go.gov.sg/moe-fsbb>

## Interactive Site



<https://go.gov.sg/my-fsbb-path>

## Infographic (updated Feb 2023)



<https://go.gov.sg/fsbb-pathways>

# Find out more about Full SBB

## MOE Explainer Video



<https://go.gov.sg/moe-fsbb-explainer>

## CNA Singapore Tonight Video



<https://go.gov.sg/cna-fsbb>





**Thank you**

# National Digital Literacy Programme (NDLP) Briefing



**Mr David Lim**  
**HOD ICT**



Learners who Share  
Citizens who Care  
Leaders who Dare

# Agenda

- 1. Overview of the NDLP and the PLD Initiative**
- 2. Learning with a PLD in in Northland**
- 3. Supporting Students in Safe and Effective Use of Devices**
- 4. Device and Funding Information**
- 5. What's next?**



# The National Digital Literacy Programme (NDLP)

The NDLP was launched in March 2020 to **make digital learning inclusive** by **equipping students with the digital literacies** to be future-ready.

Under the NDLP, every secondary school student will own a school-prescribed **personal learning device (PLD)**. Students may use funds from their Edusave Account to pay for the PLD.





# Intended Outcomes of the PLD Initiative

The use of the PLD for teaching and learning aims to:



**Support the  
Development of Digital  
Literacies**



**Support self-directed and  
collaborative learning**



**Enhance Teaching and  
Learning**



ICT Department

Northland Secondary School | *Learners who Share . Citizens who Care . Leaders who Dare .*

# Learning with a PLD in Northland Secondary School



ICT Department

Northland Secondary School | *Learners who Share . Citizens who Care . Leaders who Dare .*

# How will your child/ ward use the PLD?

At **Northland Secondary School**, your child will be using the PLD for ...

1. Active learning in all subjects
2. Authentic learning tasks
3. Alternative assessments
4. Home-Based Learning
5. Coding in Applied Learning Programme



# How will your child/ ward use the PLD?

**PLDs will be used to personalise and enhance students' learning experience to develop:**

1. Digital literacy
2. Collaborative skills
3. Self-directed learning
4. Passionate lifelong learners

**Each student learns to develop and demonstrate the knowledge, skills, practices and attitudes necessary to be a successful citizen of the 21st century.**



# Supporting Students in the Safe and Effective Use of the Devices



ICT Department

Northland Secondary School | *Learners who Share . Citizens who Care . Leaders who Dare .*



# Cyber Wellness Concerns Identified by International Studies



## Harmful Online Content

50% of Singaporean teenagers are exposed to cyber threats and 28% of them are exposed to violent content.

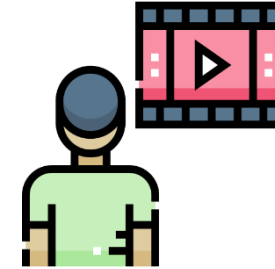
*(COSI, 2020)*



## Distraction from Learning

72% of teens feel compelled to immediately respond to texts, social posts and notifications.

*(Kimball & Cohen, 2019)*



## Excessive Screen Time

Teens who don't sleep enough report higher levels of depressive symptoms than well-rested peers (31% vs. 12%).

*(Kimball & Cohen, 2019)*

# Supporting Students in the Safe and Effective Use of the Devices

The school has measures in place to enable a safer digital environment for learning with the use of PLDs, e.g.

- Classroom management and routines
- Educating students on Cyber Wellness
- Partnering parents/guardians to support students in their use of technology for learning
- Device Management Application (DMA)



# Classroom Management and Routines

**G**ET READY!

- Chromebook fully charged at the start of the day
- Screen Down
- Wait for Teacher's instructions

**E**NGAGE in Learning

- Be Present, physically and mentally!
- Participate actively in all learning activities!

**A**LERT  
your teachers

- When you face cyber issues such as cyberbullying or inappropriate content
- When you face technical issues with your chromebook

Be **R**ESPONSIBLE  
for your own learning

- Record all homework/tests in your Calendar!
- Take notes to summarize your learning!
- Complete all tasks assigned to you.

**U**PHOLD the Responsible Use Policy

**P**ROTECT  
your password & your device

- Lock up your Chromebook.
- Lock the doors when you leave your classroom!



# Cyber Wellness Education

## Educating students on Cyber Wellness

MOE has made significant changes to the Character and Citizenship Education. Cyber Wellness lessons will feature significantly in the CCE2021 lessons.

Topics covered in the Cyber Wellness lessons include:

- Cyber Use
- Cyber Identity
- Cyber Relationships
- Cyber Citizenship
- Cyber Ethics



# Parents'/Guardians' Role

We would like to partner parents/guardians to ensure that students are well supported in their use of technology for learning.

As parents/guardians, you can help in the following ways:

- Model good digital habits for your child/ward e.g. parents/guardians not using devices during family meals.
- Know your child/ward well, and have conversations with your child/ward about safe and responsible use of technology.
- Set ground rules for internet/device usage.
- Encourage your child/ward to use productivity tools using his/her PLD, to organise information and simplify tasks for efficiency.





# Role of Device Management Application (DMA)

- Your child's/ward's PLD will be installed with a Device Management Application (DMA) to provide a safer digital environment for learning.
- Installation of the DMA will be performed after the collection of the device. Students will be guided on the installation.
- This applies to both devices purchased through the school and pre-existing student-owned devices.
- The DMA will be **funded by MOE** and will be **uninstalled** from the device **when your child/ward graduates/leaves the school.**



# Role of Device Management Application (DMA)

## In-School DMA Settings (Default)

Schools will determine DMA settings for **in-school use**. As a default, these settings will continue to be in place after school as well:

- MOE and the school will set the level of web content filtering, including filtering out objectionable content or content that may not be conducive to teaching and learning (e.g. social media, pornography, gambling, or websites containing extremist content)
- Students will be able to use the device from **<7 a.m. to 10 p.m.>** daily
- The school will determine the apps and programs to be installed to support teaching and learning



# Role of Device Management Application (DMA)

## Providing Parents/Guardians with Greater Choice for After-School PLD Use

*The school will provide parents/guardians with more information on exercising the options.*

Default	Option A	Option B
<b>In-school DMA settings will continue after school hours</b>	<b>Parents/Guardians can modify the DMA settings after school hours</b>	<b>Parents/Guardians can choose to disable DMA after school hours</b>
For parents/guardians who want their child's/ward's use of the device to be restricted only to teaching and learning, and prefer to leave it to the school to decide on DMA settings after school hours.	For parents/guardians who want more leeway over the use of the device, and prefer to take charge of the level of restrictions for their child's/ward's use of the device after school hours.	For parents/guardians who do not want their child's/ward's use of the device to be regulated by DMA after school.

- Having default school settings continue after school hours is the best option for parents/guardians who prefer not to, or do not feel ready to manage their child's/ward's device use on their own.
- Parents/guardians can request to change their choice of DMA settings at any time.



# Role of Device Management Application (DMA)

## Providing Parents/Guardians with Greater Choice for After-School PLD Use

	Default	Option A	Option B
<b>Protecting students from objectionable content</b>	MOE/school sets level of web content filtering	Parents/Guardians can apply additional content filtering	No content filtering
<b>Reduce distractions from learning through control of applications</b>	Parents/Guardians and students are <b>unable</b> to install additional applications	Parents/Guardians and/or students can install additional applications after school hours, but these applications are disabled during school hours	
<b>Limit screen time</b>	School sets hours during which students are able to use the device online	Parents/Guardians can modify the amount of screen time*	No control over screen time

\*Screen time limits set by the school will override parents'/guardians' settings during school hours.



# Role of Device Management Application (DMA)

## Providing Parents/Guardians with Greater Choice for After-School PLD Use

	Default	Option A	Option B
<b>Parent/guardian account</b>	Provided to allow monitoring of PLD activities after school hours		Not provided
<b>Monitor students' cyber activities</b>	Parents/Guardians can track their child's/ward's browser history after school hours		Parents/Guardians will <b>not</b> be able to monitor or control their child's/ward's use of the device through the DMA after school hours  No data* will be collected during use of PLD after school hours

\*Parents/Guardians and students on Option B will need to use non-Chrome browsers to avoid web browsing history tracking and web content filtering. **Only for Windows schools**





# Role of Device Management Application (DMA)

## Deciding on the Choice of After-School DMA Option

Parents/guardians may wish to consider the following questions before deciding on an after-school DMA option which is best for your child's/ward's learning.

Parents will be invited to make the option at a later date.

### 1. Child's/ward's current device usage habits

- How much time does my child/ward spend on their device?
- How well is my child/ward able to regulate their device usage on their own?
- Does my child/ward get easily distracted while doing online learning?

### 2. Parents'/Guardians' involvement

- How confident and familiar am I with managing my child's/ward's cyber wellness?
- Are there existing routines and open conversations on the use of the Internet at home?
- Am I aware of how to prevent different types of cyber threats that my child/ward might face?

*Have a conversation with your child/ward to talk about which setting is best for your child's/ward's learning.*



# Role of Device Management Application (DMA)

## Data Collected by the DMA

The DMA does **NOT** collect any of the following data:

- Login IDs and passwords entered into websites or into any applications
- Actions performed (e.g. posts, online comments, items added to a shopping cart, etc.) when visiting websites and using apps
- Documents and photos stored in the PLDs
- PLD location
- Webcam videos and microphone recordings



# Role of Device Management Application (DMA)

## Data Collected and Access Rights

The DMA does **NOT** collect any of the following data:

- All user data collected through the DMA will be stored in secure servers managed by appointed DMA Vendors with stringent access controls and audit trails implemented. The DMA solutions used are cloud-based Software-as-a-Service (SaaS) solutions and are trusted solutions that have been operating for many years. They have also been subject to regular security review and assessment by independent reviewers.
- MOE has assessed and concluded that the DMA solutions have sufficient security robustness to ensure data collected are properly stored and protected. MOE will also subject the DMA Vendors to regular audit on the security of the system based on tender requirements.



# Role of Device Management Application (DMA)

## Data Collected and Access Rights

To prevent unauthorised access, DMA Administrators and DMA Vendors will be required to access their accounts using 2-factor authentication or the equivalent to ensure proper accountability for information access and other activities performed. There will be regular account reviews and audits for DMA Administrators' and DMA Vendors' accounts.



# Additional Resources for Parents

To support you in keeping your child/ward safe online, you may refer to these additional resources:

- Parent Handbooks (I) and (II) on Learning with a Personal Learning Device (shared by the school)
- Parent Kit on Cyber Wellness for Your Child (<https://go.gov.sg/moe-cyber-wellness>)
- Parent Kit on Raising a Digitally Smart Child (<https://go.gov.sg/moe-raising-a-digitally-smart-child>)
- Parenting with MOE: Instagram Live session on Raising Digitally Smart Kids (<https://go.gov.sg/iglive-raising-digitally-smart-kids>)
- Schoolbag article 'Keeping our teens safe online' (<https://www.schoolbag.edu.sg/story/keeping-our-teens-safe-online>)
- MOE Cyber Wellness Programme (<https://www.moe.gov.sg/programmes/cyber-wellness/>)
- Media Literacy Council (<https://go.gov.sg/better-internet-sg>)
- National Library's Learning & Information Literacy Resources (<https://sure.nlb.gov.sg/>)
- TOUCH Community Services (<https://help123.sg>)





# Device and Funding Information



ICT Department

Northland Secondary School | *Learners who Share . Citizens who Care . Leaders who Dare .*

# Northland Secondary School's PLD



## Acer TravelMate Spin TMB311RN-33 Convertible

The school has chosen the PLD because of:

- Light Weight (1.49kg)
- Supports full versions of productivity software. Eg Microsoft Office
- Windows environment – same as Post-Sec education



# Northland Secondary School's PLD



Intel N200 processor, 8GB RAM,  
128GB Storage,  
11.6" Screen Size

The school will be using the  
**Acer TravelMate Spin**  
**TMB311RN-33 Convertible**  
for teaching and learning.

**Total Cost with GST: \$639.80**



ICT Department

Northland Secondary School | *Learners who Share . Citizens who Care . Leaders who Dare .*

# PLD Bundle

## Device Bundle

### What it includes

- Acer TravelMate Spin
- Power Adaptor, Mouse, Carry Case, Stylus
- 3-year warranty and 3-year insurance  
(2 repairs or 1 replacement claim)



# Insurance Coverage

---

Insurance Coverage	Claimable
<ul style="list-style-type: none"><li>● Fire</li><li>● Lightning</li><li>● Power Surges</li><li>● Accidental e.g water spillage, drop etc</li><li>● Theft due to forcible entry</li><li>● Robbery</li></ul> <p>* Accidental loss will not be covered by insurance.</p>	2 repairs or 1 replacement (3-year insurance)





# Technical Support for Students' Devices

---

Technical support will be provided to students through:

Service Desk set up in school during breaks and after school on a weekly basis

- Troubleshooting of device issues
- Solve connectivity issues
- Collection of devices to be sent for repairs

Vendor's service centre – Repair of devices (hardware issues)



# Funding Support for Singapore Citizen (SC) Students

- **The cost of the device bundle can be paid using your child's Edusave account**, after setting aside provision for payment of second-tier miscellaneous fees.
- To ensure the affordability of devices, MOE has provided Edusave top-ups of \$200 in 2020 to 2022, and \$300 in 2023, to all eligible Singaporean students in primary and secondary schools. .
- This is on top of the **annual \$290** credited into the Edusave account for Secondary School students.



# Funding Support for Singapore Citizen (SC) Students

## MOE FAS

GHI  $\leq$  \$3000

PCI  $\leq$  \$750

50% subsidy of cost  
or or \$350, whichever  
is lower

Remaining 50%  
(\$319.90) can be paid  
using child's Edusave  
Account

## School-based FAS

\$3000 < GHI  $\leq$  \$4400

\$750 < PCI  $\leq$  \$1100

30% subsidy of device  
cost or \$200,  
whichever is lower

Remaining 70%  
(\$447.86) can be paid  
using child's Edusave  
Account

## NO SUBSIDY

GHI > \$4400

PCI > \$1100

Not eligible for  
subsidy

Device cost (\$639.80)  
can be paid using  
child's Edusave  
Account

Gross Household Income (GHI)

Per Capita Income (PCI) - PCI is GHI divided by the number of household members



ICT Department

Northland Secondary School | *Learners who Share . Citizens who Care . Leaders who Dare .*

# Funding Support for Non-Singapore Citizen Students

- Permanent residents (PR) and international students (IS) who need support could apply for subsidies, particularly those whose Gross Household Income (GHI) is below \$4400 or Per Capita Income (PCI)# is below \$1100.
- For more details, please approach the school. You may email to [northland\\_ss@moe.edu.sg](mailto:northland_ss@moe.edu.sg)



# Possible Funding Support for Permanent Residents (PR) and International Students (IS)

## Category 1

GHI  $\leq$  \$3000

PCI  $\leq$  \$750

30% subsidy of device cost

Final cash outlay:  
\$354.27

## Category 2

\$3000 < GHI  $\leq$  \$4000

\$750 < PCI  $\leq$  \$1000

20% subsidy of device cost

Final cash outlay:  
\$404.88

## Category 3

GHI > \$4000

PCI > \$1000

Not eligible for subsidy

Final cash outlay:  
\$506.10

Gross Household Income (GHI)

Per Capita Income (PCI) - PCI is GHI divided by the number of household members



ICT Department

Northland Secondary School | *Learners who Share . Citizens who Care . Leaders who Dare .*

# What's Next




ICT Department

Northland Secondary School | *Learners who Share . Citizens who Care . Leaders who Dare .*



# What's Next

## For Singapore Citizens (SC) Students


Time Frame	Activity
<b>By 5 Jan 2024, Friday</b>	Indicate your consent for Procurement and Use of Edusave via the following link: <b><a href="https://go.gov.sg/pdlpadmin">https://go.gov.sg/pdlpadmin</a></b> 
<b>From March 2024</b>	<b>Collection of Devices by students (Parents will be informed via PG)</b>

\* **Parents Gateway** would be used to convey information and to facilitate the purchase.



# What's Next

For Permanent Residents (PR) / International Students (IS)

Time Frame	Activity
<b>By 5 Jan 2024, Friday</b>	Indicate your consent for Procurement via the following link: <b><a href="https://go.gov.sg/pdlpadmin">https://go.gov.sg/pdlpadmin</a></b> 
<b>From February 2024</b>	<b>Parent/ Guardian to make payment via Giro / Cash/ Cheque.</b>
<b>From March 2024</b>	<b>Collection of Devices by students (Parents will be informed via PG)</b>

\* **Parents Gateway** would be used to convey information and to facilitate the purchase.

ICT Department

Northland Secondary School | *Learners who Share . Citizens who Care . Leaders who Dare .*



# Collection of Devices

Your child/ward will be collecting his/her device in school from Term 2 2024.

If you would like to verify the condition of the device during collection with your child/ward:

- You may arrange to collect the device at the vendor's service/collection centre\* or appoint an adult proxy to do so.
- Your child/ward would need to bring the device to school and arrange for the school's IT department to install the DMA.

Please approach the school for further advice or clarification if you would like to make this arrangement.



# Important Contacts/ Helplines

To access/find out more about...	Contact/Helpline
Edusave Balance	6260 0777
Financial assistance available	6257 6781 (School's General Office)/ Email to <a href="mailto:northland_ss@moe.edu.sg">northland_ss@moe.edu.sg</a>
NDLP in Northland	Please email your queries to: <a href="mailto:northland_ss@moe.edu.sg">northland_ss@moe.edu.sg</a>

This deck of slides can be found on the school website:  
<https://northlandsec.moe.edu.sg>



# Frequently Asked Questions



ICT Department

Northland Secondary School | *Learners who Share . Citizens who Care . Leaders who Dare .*

## 1. Can my child NOT purchase the device?

Every student is required to have a device for teaching and learning purposes and is encouraged to purchase one through the school via MOE's bulk tender. Students are encouraged to use the device model prescribed by the school, as the uniformity of systems and software would ensure a smooth learning experience for everyone. The device purchased through the school will come with the necessary warranty and insurance as well.

## 2. Can my child NOT purchase the device as he/she has his/her own device?

Students are encouraged to use the model prescribed by the school for a smooth learning experience. If students wish to use their own devices, these devices must meet the necessary specifications stated by the school (Chromebook with stylus). They must also be willing to allow the school to install Device Management Application software to manage the device, similar to all school-selected devices.





# THANK YOU



ICT Department

Northland Secondary School | *Learners who Share . Citizens who Care . Leaders who Dare .*

# NSS Parent Support Group (PSG) Briefing



Learners who Share  
Citizens who Care  
Leaders who Dare





# NSS PSG WELCOMES YOU!



Learners who Share  
Citizens who Care  
Leaders who Dare



# Content

- Welcome by PSG Chairperson
- Sharing of Parent Partnership in NSS
- Why join PSG and PSG Commitment



Learners who Share  
Citizens who Care  
Leaders who Dare

# Every Parent, A Supportive Partner

Parents...

- are the most important teachers in a child's life,
- have the greatest impact on a child,
- can positively support a child's education journey.



**Understanding, Trust, Respect, Single Consistency,  
Dual-way Communication, Multi-pronged Care**



Learners who Share  
Citizens who Care  
Leaders who Dare



# Parent Partnership in NSS

- **Understanding** and **supporting** your child through parent education
- **Participating** in key school events to better appreciate school life
- **Networking** and **learning** together with other parents
- **Career guidance** and **opportunities** for students

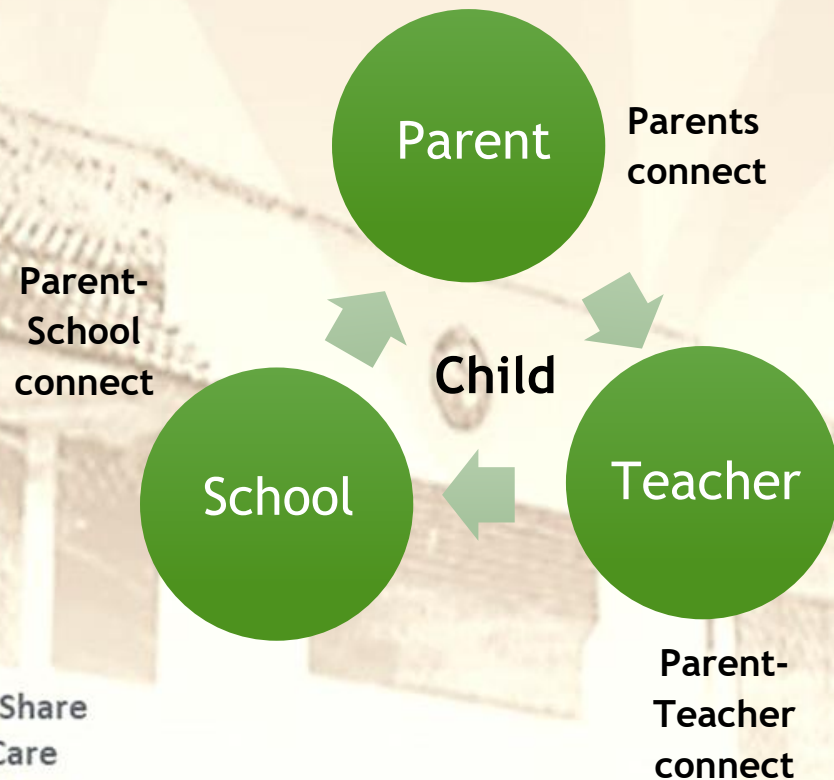


Learners who Share  
Citizens who Care  
Leaders who Dare



# Why join the PSG?

Parents and Teachers share the same goals:  
to bring out the best in their children



Learners who Share  
Citizens who Care  
Leaders who Dare

# PSG Commitments

## Parent Support Group:

- Meets bi-monthly, face to face or via zoom
- Organises workshops and activities regularly for parents
- PSG to meet once a term to discuss parents' needs, how to support the school
- PSG invited to school events such as Racial Harmony Day and Teachers' Day



Learners who Share  
Citizens who Care  
Leaders who Dare



# Join our PSG Family Today



<https://go.gov.sg/nsspsgregistration>  
2024



Learners who Share  
Citizens who Care  
Leaders who Dare

# Coming up next....

- 1) Meet & Greet Session with **Class Mentors 10am**
- 2) Meet & Greet Session with **Guidance Team 10.45am**

*thank you!*



Learners who Share  
Citizens who Care  
Leaders who Dare